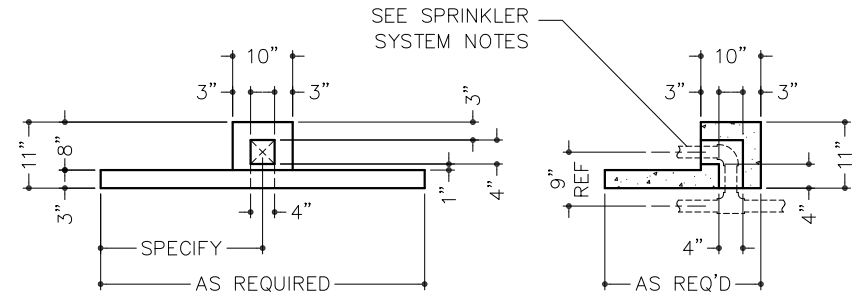


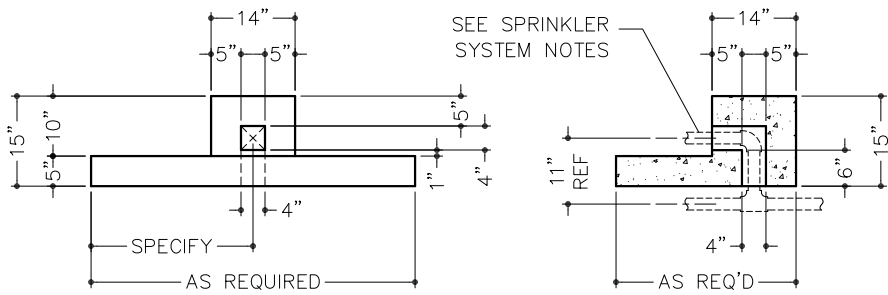
FRONT ELEVATION  
MODEL 222UPM, U.L. CLASS M

VERTICAL SECTION



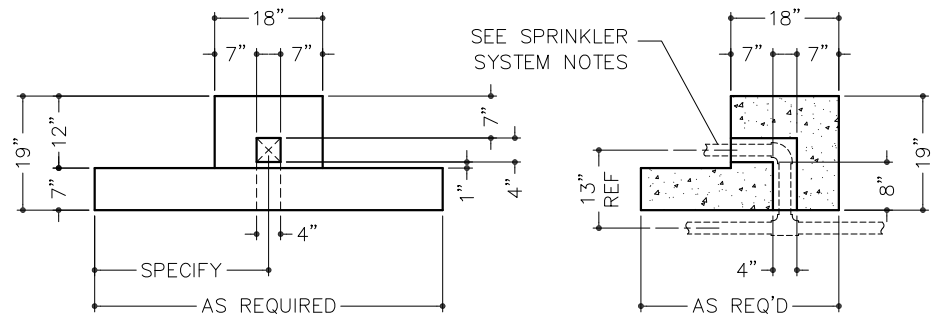
FRONT ELEVATION  
MODEL 222UP1, U.L. CLASS 1

VERTICAL SECTION



FRONT ELEVATION  
MODEL 222UP2, U.L. CLASS 2

VERTICAL SECTION



FRONT ELEVATION  
MODEL 222UP3, U.L. CLASS 3

VERTICAL SECTION

NOTES:

1. UTILITY PORTS ARE USED TO PROVIDE A SECURE CONNECTION OF THE FIRE SPRINKLER SYSTEM FROM OUTSIDE THE VAULT TO WITHIN THE VAULT.
2. UTILITY PORTS CAN BE CAST INTO A MODULAR VAULT ROOF PANEL (SHOWN) OR WALL PANEL.
3. SPECIFY AT THE TIME OF MODULAR VAULT ORDER.
4. PANELS ARE CONSTRUCTED OF FIBER REINFORCED CONCRETE AND REBAR IN A FIVE-SIDED STEEL PAN. STEEL PAN FORMS INTERIOR OF VAULT WITH EXPOSED CONCRETE ON EXTERIOR.
5. ALL INSIDE ADJOINING SURFACES TO BE WELDED WITH 1" OF 1/8" WELD PER FOOT OF LENGTH.
6. ALL UTILITY CONNECTIONS ARE BY OTHERS.
7. PANELS ARE SHIPPED "KNOCK-DOWN" TO BE ERECTED AT JOB SITE PER SPEC'S FURNISHED.
8. ALL DIMENSIONS NOMINAL. TOLERANCES OF 1/32" PER FOOT OF LENGTH ARE TO BE ALLOWED.
9. THIS STRUCTURE IS NOT DESIGNED FOR ADDITIONAL LOADS APPLIED TO THE ROOF.
10. IT IS THE RESPONSIBILITY OF THE OWNER/ARCHITECT/GENERAL CONTRACTOR TO ENSURE THAT ALL LOCAL, STATE, & FEDERAL ADA REGULATIONS ARE IN COMPLIANCE.
11. PANELS ARE CAST WITH LIFT POINTS EACH END. REQUEST (P/N 9040-0002) 3/4" T-12 LIFTING SWIVEL AND (P/N 9040-0006) 3/4"x 4" COIL BOLT FOR PROPER RIGGING ATTACHMENT.

CAUTION!

PRIOR TO INSTALLATION READ VAULT PANEL INSTALLATION PROCEDURES AND VAULT DOOR INSTALLATION MANUAL PROVIDED. ONLY PROFESSIONALS EXPERIENCED AND QUALIFIED IN THE INSTALLATION OF MODULAR VAULTS AND VAULT DOORS SHOULD INSTALL THIS PRODUCT.

SPRINKLER SYSTEM NOTES:

THE 4" SQUARE OPENING PROVIDED THRU EACH UTILITY PORT WILL ACCOMMODATE UP TO 1-1/2" SCHEDULE 40 PIPE FITTINGS, SHOWN. FITTINGS SHOWN FOR REFERENCE ONLY, SPRINKLER SYSTEM BY OTHERS.

DO NOT SCALE

**American**  
**vault**® Waco Texas

PRODUCT APPLICATION DRAWING  
200 SERIES UTILITY PORT  
PANEL (MODEL 222UP)



SIZE	DWG NO	DATE	SHEET
A	20222	12.01.2023	1 OF 1