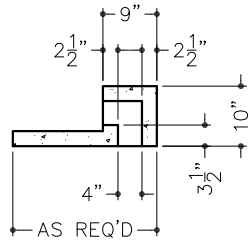
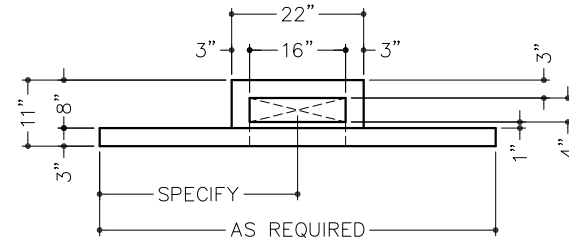


FRONT ELEVATION

MODEL 222VPM, U.L. CLASS M

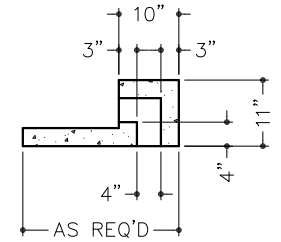


VERTICAL SECTION

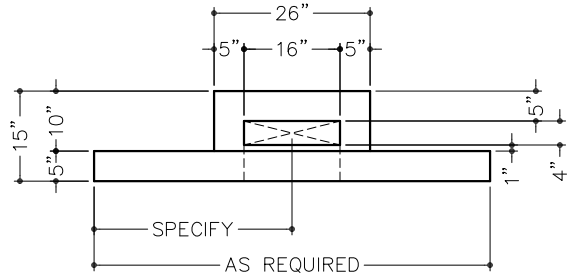


FRONT ELEVATION

MODEL 222VP1, U.L. CLASS 1

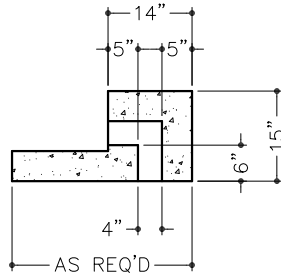


VERTICAL SECTION

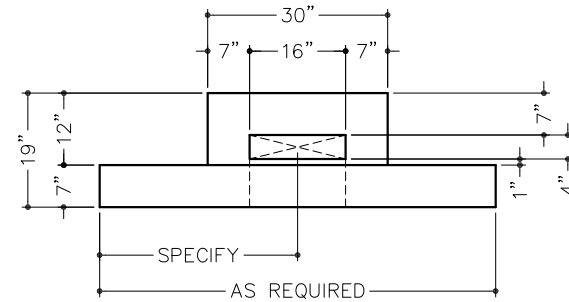


FRONT ELEVATION

MODEL 222VP2, U.L. CLASS 2

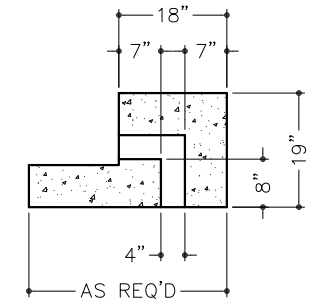


VERTICAL SECTION



FRONT ELEVATION

MODEL 222VP3, U.L. CLASS 3



VERTICAL SECTION

NOTES:

1. VENT PORTS ARE USED FOR A SECURE CONNECTION OF AN OUTSIDE VENTILATING SYSTEM THAT PROVIDES CIRCULATING AIR WITHIN THE VAULT.
2. VENT PORTS CAN BE CAST INTO A MODULAR VAULT ROOF PANEL (SHOWN) OR WALL PANEL.
3. SPECIFY AT THE TIME OF MODULAR VAULT ORDER.
4. PANELS ARE CONSTRUCTED OF FIBER REINFORCED CONCRETE AND REBAR IN A FIVE-SIDED STEEL PAN. STEEL PAN FORMS INTERIOR OF VAULT WITH EXPOSED CONCRETE ON EXTERIOR.
5. ALL INSIDE ADJOINING SURFACES TO BE WELDED WITH 1" OF 1/8" WELD PER FOOT OF LENGTH.
6. ALL UTILITY CONNECTIONS ARE BY OTHERS.
7. PANELS ARE SHIPPED "KNOCK-DOWN" TO BE ERECTED AT JOB SITE PER SPEC'S FURNISHED.
8. ALL DIMENSIONS NOMINAL. TOLERANCES OF 1/32" PER FOOT OF LENGTH ARE TO BE ALLOWED.
9. THIS STRUCTURE IS NOT DESIGNED FOR ADDITIONAL LOADS APPLIED TO THE ROOF.
10. IT IS THE RESPONSIBILITY OF THE OWNER/ARCHITECT/GENERAL CONTRACTOR TO ENSURE THAT ALL LOCAL, STATE, & FEDERAL ADA REGULATIONS ARE IN COMPLIANCE.
11. PANELS ARE CAST WITH LIFT POINTS EACH END. REQUEST (P/N 9040-0002) 3/4" T-12 LIFTING SWIVEL AND (P/N 9040-0006) 3/4"x 4" COIL BOLT FOR PROPER RIGGING ATTACHMENT.

CAUTION !

PRIOR TO INSTALLATION READ VAULT PANEL INSTALLATION PROCEDURES AND VAULT DOOR INSTALLATION MANUAL PROVIDED. ONLY PROFESSIONALS EXPERIENCED AND QUALIFIED IN THE INSTALLATION OF MODULAR VAULTS AND VAULT DOORS SHOULD INSTALL THIS PRODUCT.



DO NOT SCALE

American Vault[®] Waco Texas

PRODUCT APPLICATION DRAWING
200 SERIES VENT PORT
PANEL (MODEL 222VP)

SIZE	DWG NO	DATE	SHEET
A	20221	12.01.2023	1 OF 1