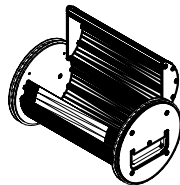


END OPENING
CARRIER FOR USE
WITH MODEL
781-02 SYSTEM
SEE NOTE 2



SIDE OPENING
CARRIER FOR USE
WITH MODEL
781-01 SYSTEM
SEE NOTE 1

NOTE

1. MODEL 781-01 SYSTEM INCLUDES SIDE OPENING REMOVABLE CARRIER. SYSTEM IS RATED FOR 25 LBS.
2. MODEL 781-02 SYSTEM INCLUDES END OPENING CAPTIVE CARRIER. SYSTEM IS RATED FOR 15 LBS.

2	9033-0008	COMP CPLG,8"x8" LG.	1
2	9033-0002	BEND w/AIR PORT,8x32 STL	2
2	9033-0001	TUBE, STL 8"x16 GAx10'LG	4
8	8428-0004	H/CLMP 2-3/4 TO 3-3/4 SS	7,8
4	8400-0003	LEVELER 3/8-16x2-1/2	7,8
2	8340-0012	NUT,U TYPE CLIP,8-32	7,8
4	8097-0001	WEDGE ANCHOR 3/8x2-3/4	7,8
2	8020-1316	TPHMS 8-32x1/2 SS	7,8
2	8020-1310	TPHMS 8-32x5/16 SS	7,8
1	781-9185	CASE,SIDE PNL MTG BKT	-
2	781-9182	TRIM,CEILING TRANSITION	3,1
1	781-9153	TRIM,COUNTER-TOP	3,1
2	781-4100	KIT, PIPE SADDLE 8x3	1
2	781-4000	AIR HANDLER ASSY	1
1	781-2800	T/T FINAL ASSY	6
1	781-1800	C/T FINAL ASSY	6
1	781-1001-01	SYSTEM WIRING DIAGRAM	-
5	7428-0008	T/BLOCK,8 POS PLUG	7,8
2	7428-0002	T/BLOCK,2 POS PLUG	7,8
4	700-9911	CONDUIT,3/4MCx10	5
1	2275-0004	HOSE, 3" x 25' FLEXIBLE	-
QTY	PART NO.	DESCRIPTION	NOTE

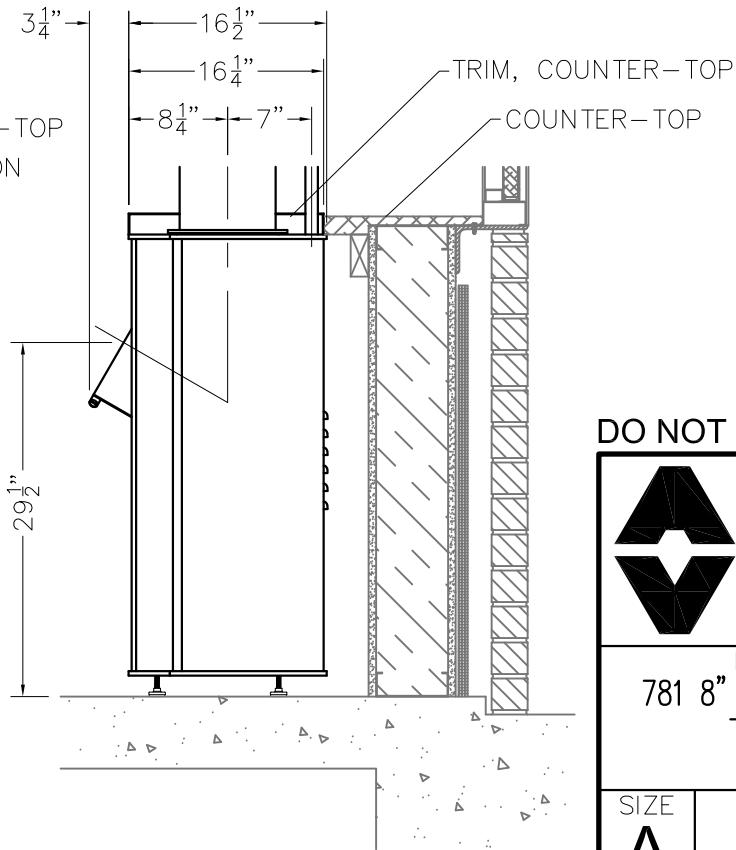
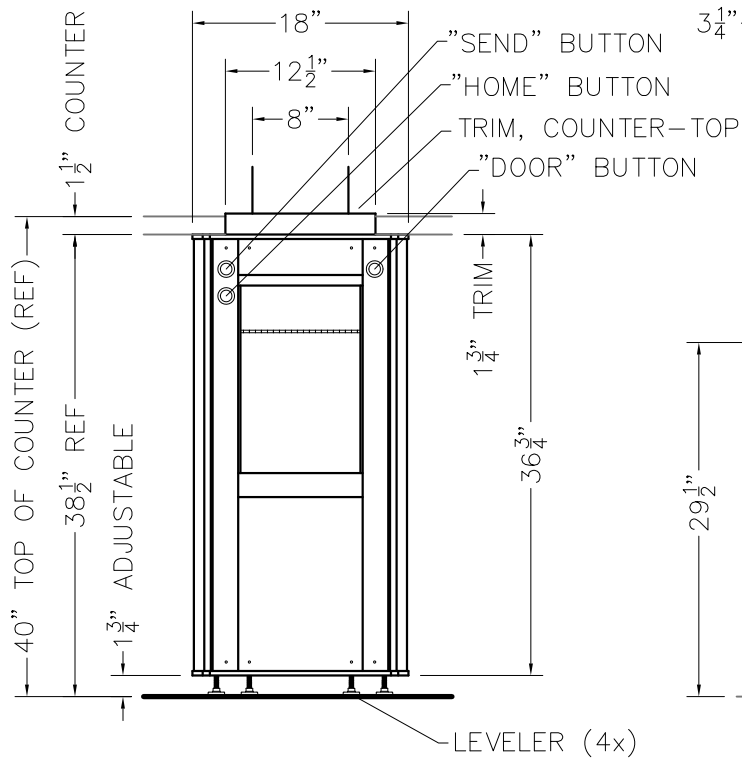
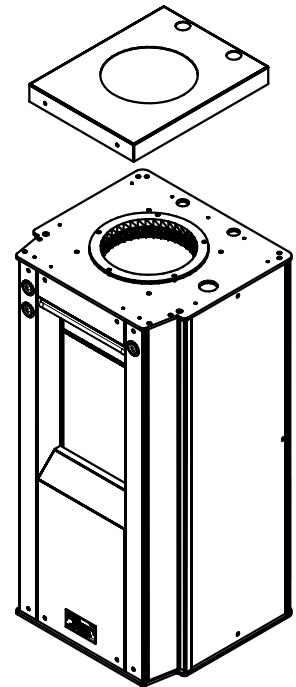
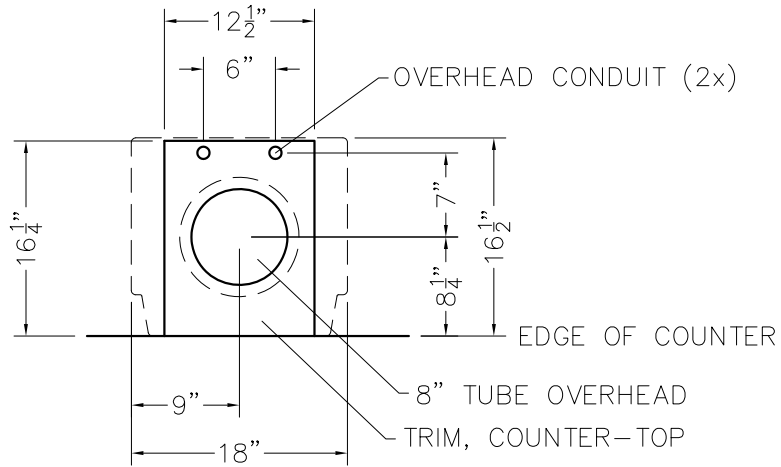
BASIC SYSTEM COMPONENTS

DO NOT SCALE

American Vault[®] Waco Texas

PRODUCT APPLICATION DRAWING
781 8" UPSEND COMMERCIAL TRANSPORT SYSTEM
SYSTEM COMPONENTS
MODEL 781-01 & MODEL 781-02

SIZE	DWG NO	DATE	SHEET
A	20142	12.01.2023	1 OF 5

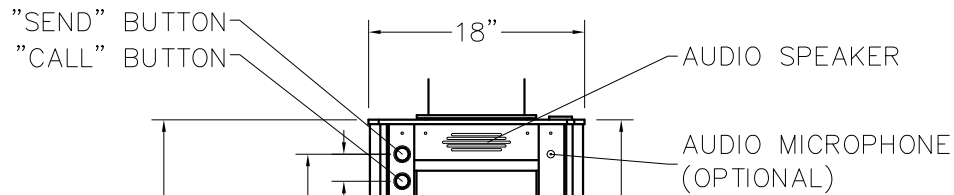
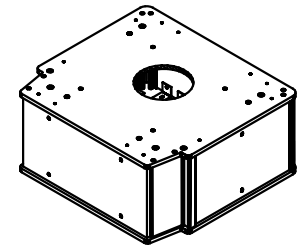
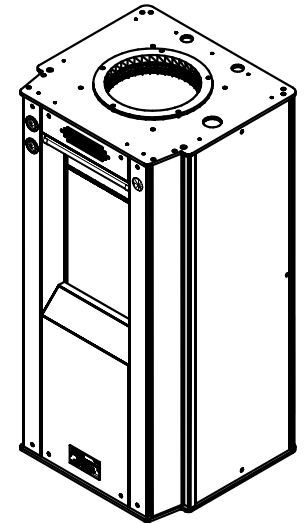
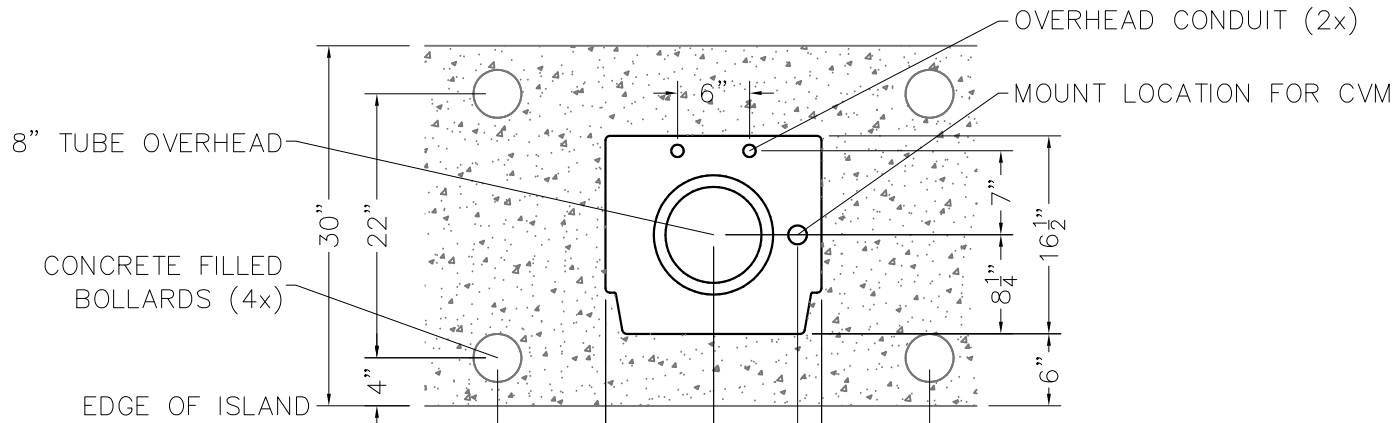


DO NOT SCALE

American
vault® Waco Texas

PRODUCT APPLICATION DRAWING
 781 8" UPSEND COMMERCIAL TRANSPORT SYSTEM
 TELLER TERMINAL DETAIL

SIZE	DWG NO	DATE	SHEET
A	20142	12.01.2023	2 OF 5



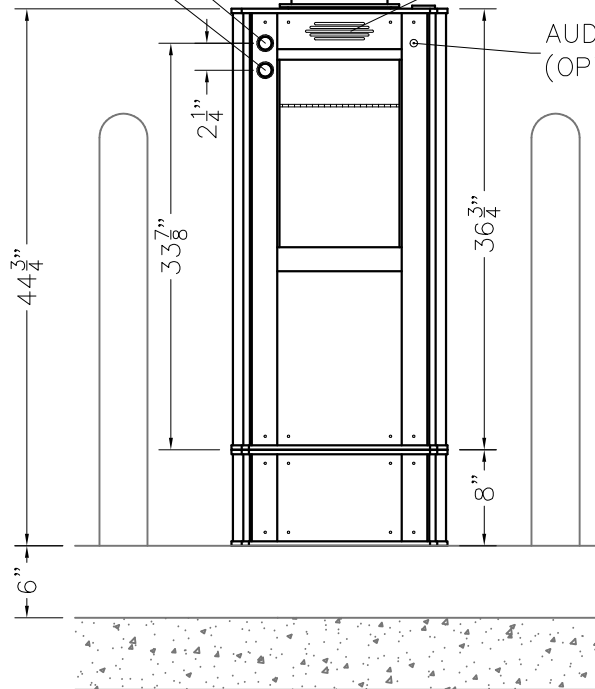
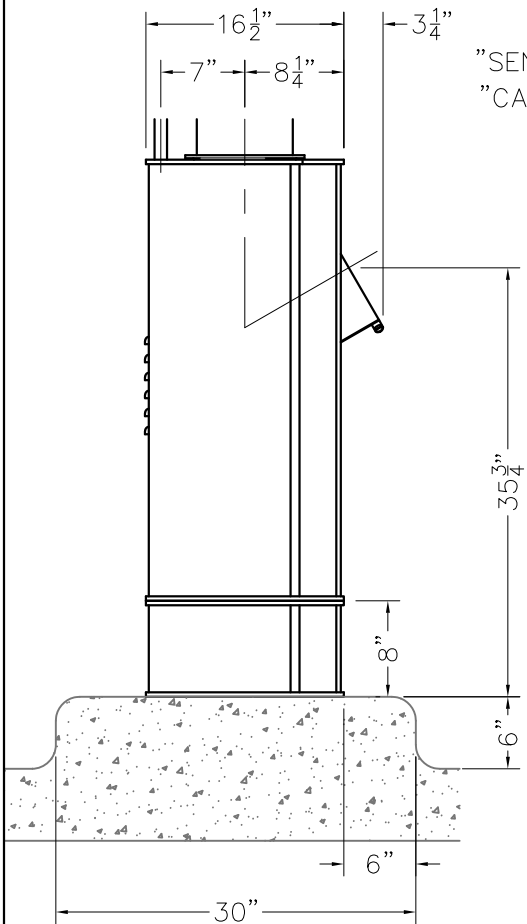
CUSTOMER TERMINAL
SHOWN WITH RECOMMENDED OPTION
RISER, 8" PART #781-8000

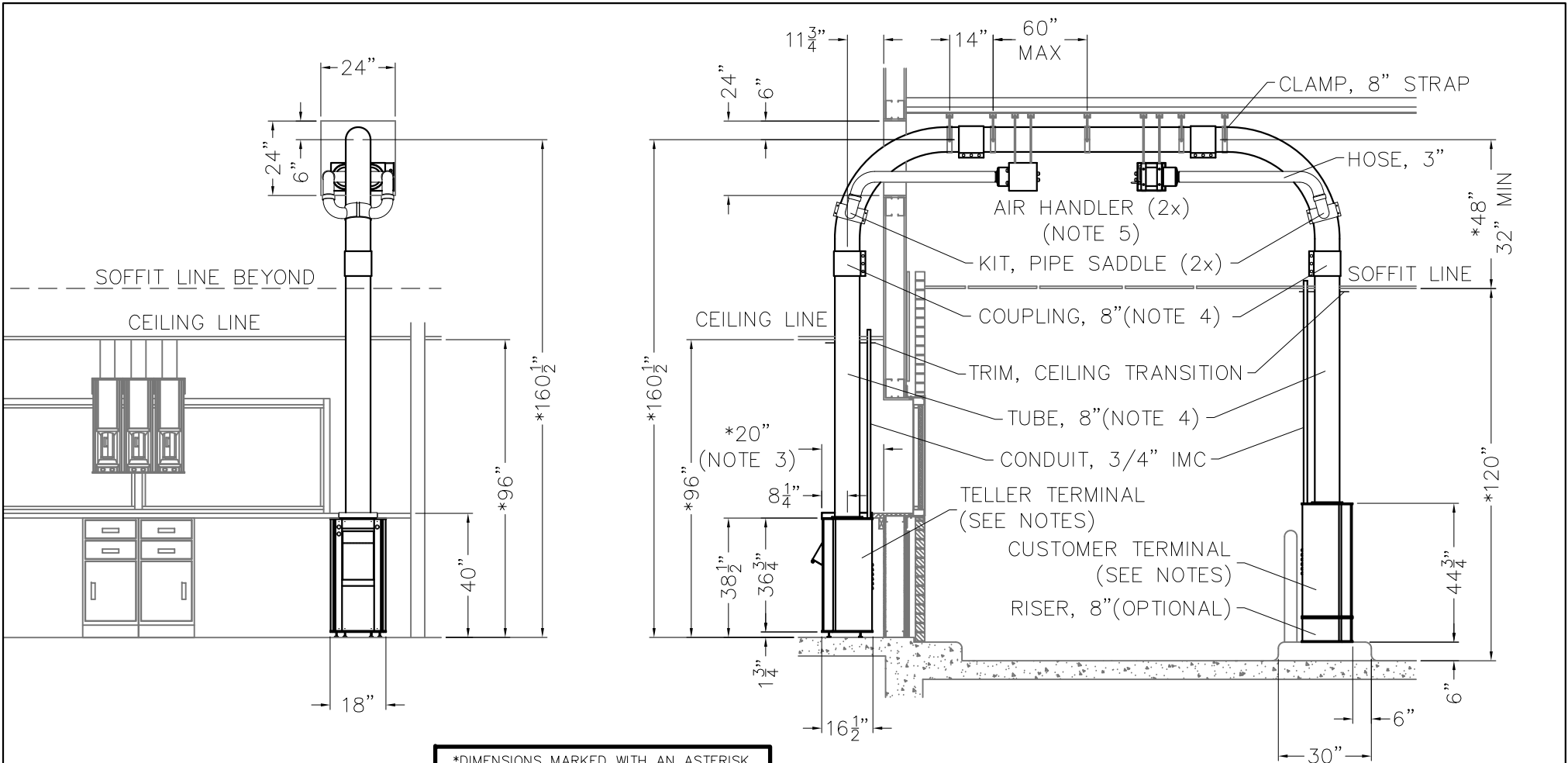
DO NOT SCALE

American
vault® Waco Texas

PRODUCT APPLICATION DRAWING
781 8" UPSEND COMMERCIAL TRANSPORT SYSTEM
CUSTOMER TERMINAL DETAIL

SIZE	DWG NO	DATE	SHEET
A	20142	12.01.2023	3 OF 5





*DIMENSIONS MARKED WITH AN ASTERISK
MAY VARY WITH BUILDING/CANOPY
CONSTRUCTION. REFERENCE NOTES BELOW

NOTES:

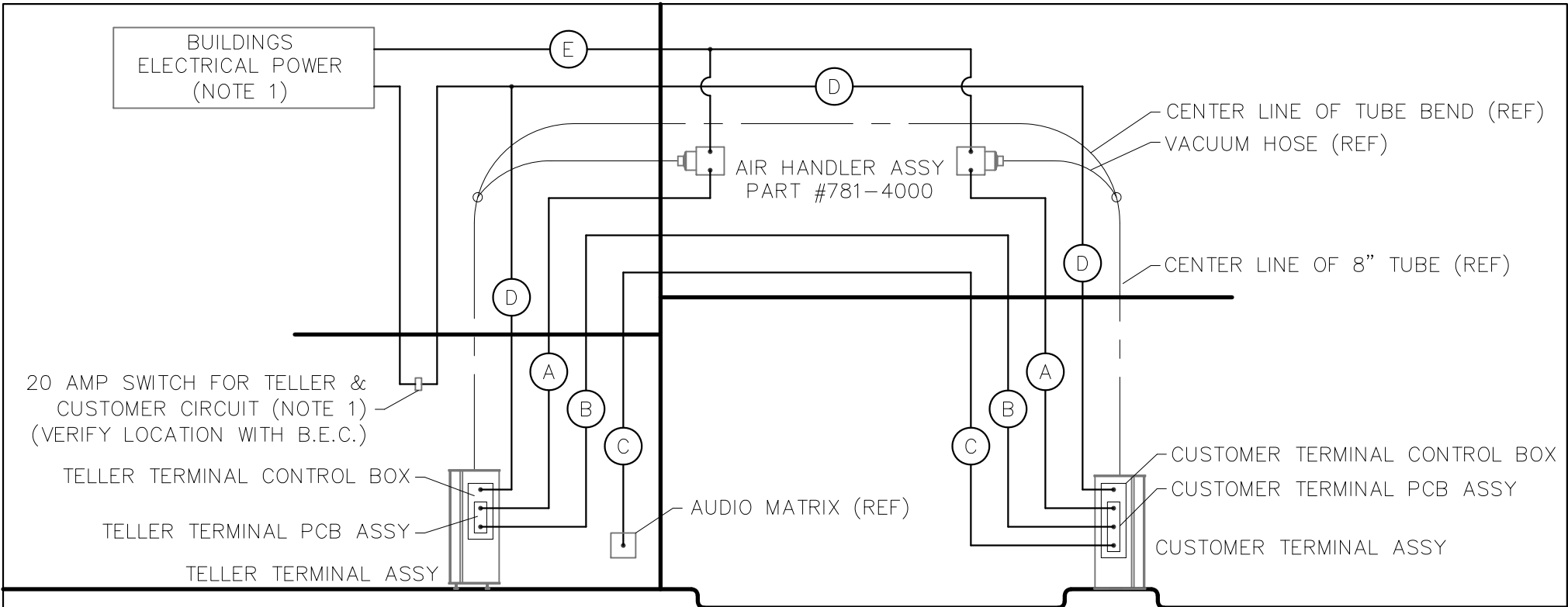
1. CANOPY AND SOFFIT DIMENSIONS SHOWN ARE REQUIRED TO FULLY ENCLOSE BEND AND TUBE TRANSITION. VARYING FROM THESE DIMENSIONS IS ACCEPTABLE, HOWEVER THE TRANSITION WILL BE EXPOSED.
2. THE RECOMMENDED MINIMUM ISLAND WIDTH IS 30". AN ISLAND WIDTH LESS THAN THIS CAN BE USED WITH PROPER PROTECTIVE BOLLARDS AND OR GUARDS.
3. COUNTER-TOP DEPTH SHOWN IS MAXIMUM RECOMMENDED DEPTH WHEN THE 700 SERIES COMMERCIAL TRANSPORT SYSTEM (MODEL 781) IS USED IN COMBINATION WITH THE 300 SERIES COMMERCIAL DEAL DRAWER (MODEL 1000A) OTHERWISE DEPTH MAY VARY FROM THAT SHOWN.
4. TUBING AND BENDS ARE CONSTRUCTED OF 16 GA GALVANIZED STEEL. JOINTS ARE 8" COMPRESSION COUPLINGS. TUBING, BENDS & TUBING COMPONENTS ARE TO BE PAINTED (BY G.C.) AS JOB CONDITIONS DICTATE.
5. AIR HANDLER ASSY'S MUST BE HORIZONTALLY MOUNTED & LEVEL FOR PROPER OPERATION OF FLAP VALVE ASSY.
6. HOLES ARE PROVIDED IN BOTTOM PLATE OF CUSTOMER & TELLER TERMINAL FOR MOUNTING TO FLOOR OR ISLAND USING WEDGE ANCHORS PROVIDED.

DO NOT SCALE

American
vault® Waco Texas

PRODUCT APPLICATION DRAWING
781 8" UPSEND COMMERCIAL TRANSPORT SYSTEM
INSTALLED VIEW

SIZE	DWG NO	DATE	SHEET
A	20142	12.01.2023	4 OF 5



- (A) AIR HANDLER INTERFACE CABLE
4 CONDUCTOR, 22 GA.
REF. BELDEN #8444 OR EQUIV.
AVC PART #2007-0004
- (B) CUSTOMER/TELLER INTERFACE CABLE
15 CONDUCTOR, 22GA.
REF BELDEN #8456 OR EQUIV.
AVC PART #2009-0003
- (C) AUDIO INTERFACE CABLE
3 PR INDIVIDUALLY SHIELDED, 22 GA
REF. BELDEN #8777 OR EQUIV.
AVC PART #2007-0020
- (D) 120 VAC, 60Hz, 1PH, 20 AMP
DEDICATED SWITCHED BRANCH CIRCUIT
(NOTE 1)
- (E) 120 VAC, 60Hz, 1PH, 30 AMP
DEDICATED BRANCH CIRCUIT
(NOTE 1)

NOTES:

1. THE BRANCH CIRCUITS SUPPLYING THE MODEL 781 CTS AND AIR HANDLERS MUST BE DEDICATED CIRCUITS USING INDIVIDUAL HOT, NEUTRAL AND GROUND CONDUCTORS. NEITHER THE CONDUIT NOR THE NEUTRAL SHOULD BE SHARED WITH OTHER CIRCUITS.

DO NOT SCALE

American Vault[®] Waco Texas

PRODUCT APPLICATION DRAWING
781 8" UPSEND COMMERCIAL TRANSPORT SYSTEM
HOOK-UP DETAIL

SIZE	DWG NO	DATE	SHEET
A	20412	12.01.2023	5 OF 5