

**2000 Series Model 85 Depository
Installation and Operation Manual
January 01, 2024**



Model 85 Depository with
2063 Outer Housing

CAUTION

**THIS PRODUCT SHOULD ONLY BE INSTALLED AND
SERVICED BY PROFESSIONALS EXPERIENCED AND
QUALIFIED IN THE INSTALLATION OF DEPOSITORIES
AND SAFES**

Manufacture Date:

UL/Serial Number:



TABLE OF CONTENTS

DISCLAIMER

WARNINGS

1 INTRODUCTION

- 1.1 Product Overview
- 1.2 General Specification
- 1.3 Part Identification (Figure 1-1)
- 1.4 Dimensional Specifications (Drawing #20006)

2 INSTALLATION

- 2.1 Safety and Pre-Installation Procedures
- 2.2 Apparel
- 2.3 Unpacking and Inspection
- 2.4 Site Requirements
- 2.5 Installation Sequence
 - Figure 2-1 (Drawing #20043)
 - Figure 2-2 (Drawing #20044)
 - Figure 2-3 (Drawing #20111)

3 OPERATION

- 3.1 Devices
- 3.2 Letter & Bag Set-Up
- 3.3 Bag Only Set-Up
- 3.4 Lock Conversion Detail
 - Figure 3-1

4 MAINTENANCE

- 4.1 Preventative Maintenance
- 4.2 Periodic Maintenance



DISCLAIMER

The material in this manual is for information purposes only. The contents and the product described are subject to change without notice. The manufacturer makes no presentations or warranties with respect to this manual. This product was designed for certain applications only. It may not be modified and/or used for any applications other than that which it was designed. The design specifications of the product described herein is subject to change without notice. The manufacturer reserves the right to make such changes without incurring any obligation to make them in units previously sold. Differences between the unit you received and the views contained herein are the result of design improvement and/or the addition of options as specified.

WARNINGS

CAUTION: If not properly installed, operated and maintained, the use of this equipment presents the possibility of personal injury or property damage. Before use, all persons who will install, operate or maintain this product should read this manual thoroughly. For safe, dependable performance, follow all instructions and recommendations contained herein.

CAUTION: Keep hands clear of moving parts.

CAUTION: Always unplug the unit from power source prior to cleaning or servicing.

1 INTRODUCTION

1.1 Product overview

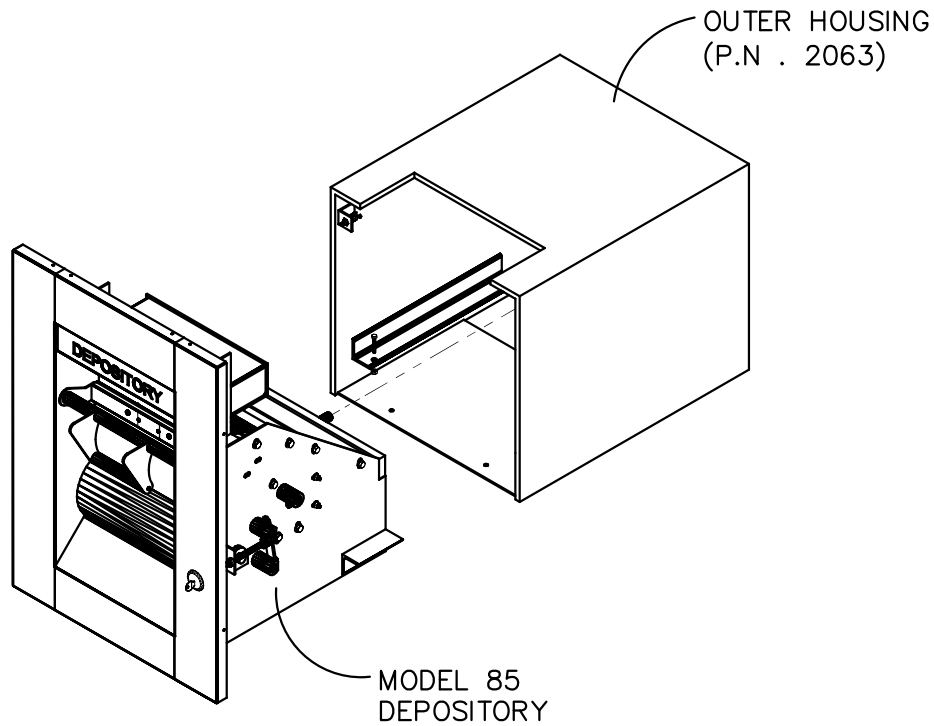
This manually operated Depository meets or exceeds UL standard 771 for after hour's deposit of cash and currency when properly installed with acceptable receiving chest and alarm protection. It bears the Underwriters label and has passed the UL tests involving attack by mechanical tools and the sophisticated fishing and trapping techniques. This Depository is designed for thru the wall applications using a rotary receptacle. Deposits drop into a secure receiver on the interior of the structure.

It has been designed to provide easy access by customer in either a drive-up or walk-up application. It comes standard with capabilities for envelope and bag deposits. A single, rotary, receptacle provides customer access for both envelope and bag operations. The receptacle access is controlled by a key lock in the depository frame. The envelope opening can be accessed without the use of a key. The bag opening is accessed only when the required key has operated the lock. Twenty-five of these keys are supplied with the depository. The receptacle is large enough to accommodate a fully packed deposit bag up to 7" x 11" in size. The depository is also available with bag only operation and requires a key with each use. The only power requirements are for the integral courtesy light. There is no power required for normal operation.

The 2063 Housing is for use as a grout-free installation. Most installations incorporate a receiving chest, such as the 970 Series Receiving Chest represented herein. The size of the chest is determined by the bag capacity required and application involved.

1.2 General Specifications

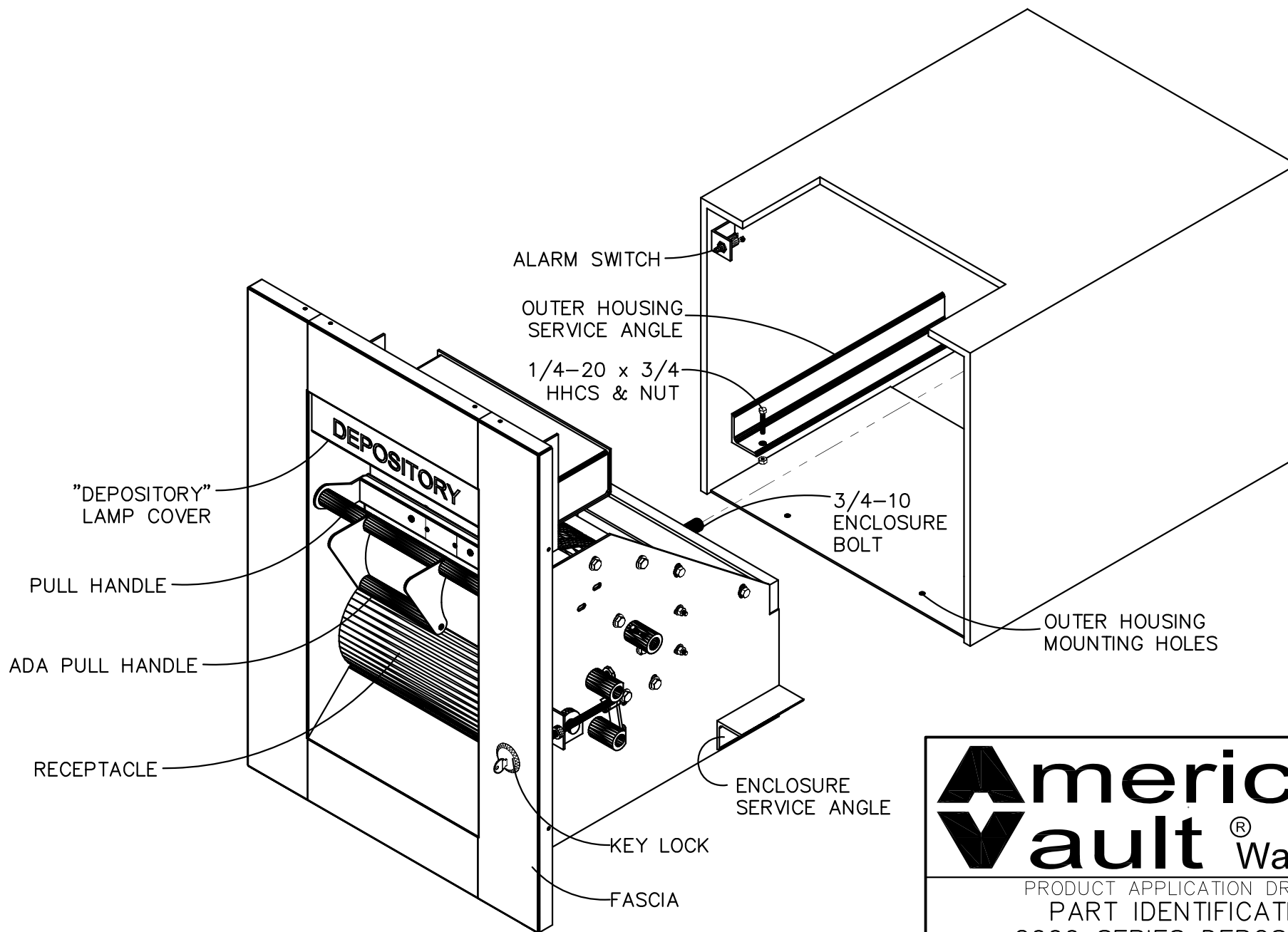
- | | |
|------------------------------|--|
| 1.2.1 Power Requirements: | (1) 120 VAC 50/60 Hz, 1PH, 10 Amp Switched Circuit
(Circuit can be switched with a photocell or switch on structure interior) |
| 1.2.2 Power Consumption: | 15 watts or .16 Amps |
| 1.2.3 Alarm Connections: | Normally Closed |
| 1.2.4 Max. Deposit Bag Size: | 7" x 11" |
| 1.2.5 Dimensions: | 23-1/2" W x 33-1/2" H x 28" D |
| 1.2.6 Weights: | Model 2000-02: 605 lbs. |



American
vault® Waco Texas

PRODUCT APPLICATION DRAWING
PART IDENTIFICATION
2000 SERIES DEPOSITORY

SIZE	DWG NO	DATE	SHEET
A	FIGURE 1-1	12.01.2023	1 OF 2



American
vault® Waco Texas

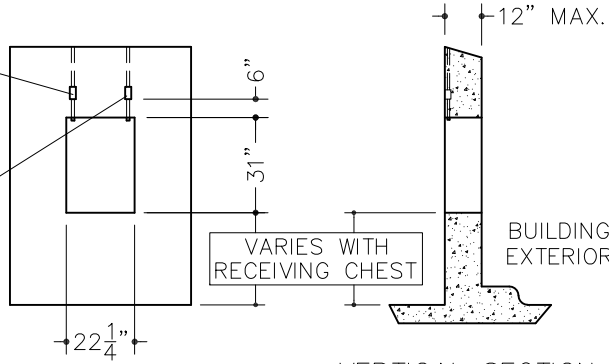
PRODUCT APPLICATION DRAWING
 PART IDENTIFICATION
 2000 SERIES DEPOSITORY

SIZE	DWG NO	DATE	SHEET
A	FIGURE 1-1	12.01.2023	2 OF 2

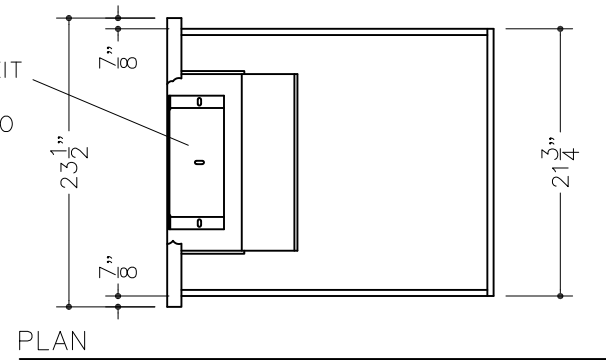
2 X 4 JUNCTION BOX WITH
3/4" CONDUIT & COVER
FOR 120V 15A SERVICE
TO DEPOSITORY SIGN

2 X 4 JUNCTION BOX WITH
3/4" CONDUIT & COVER
FOR ALARM CONNECTION

FINISHED FLOOR LINE

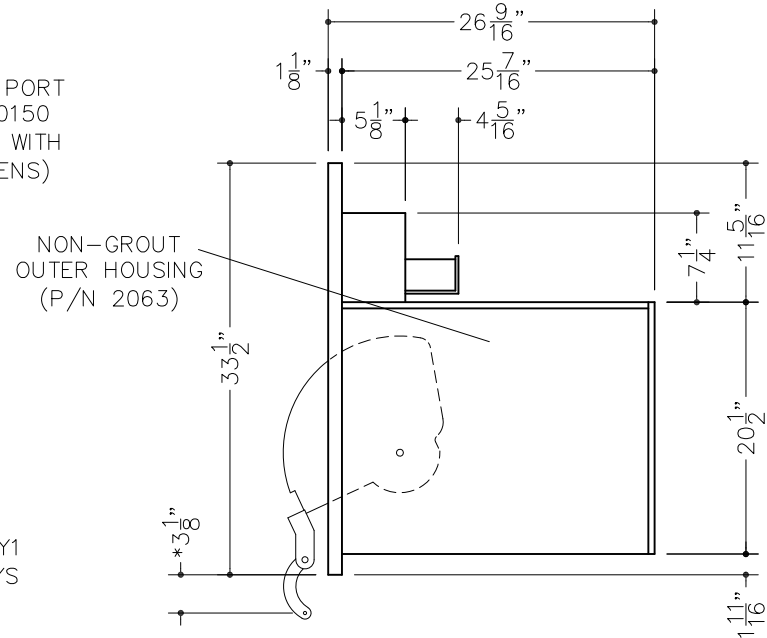
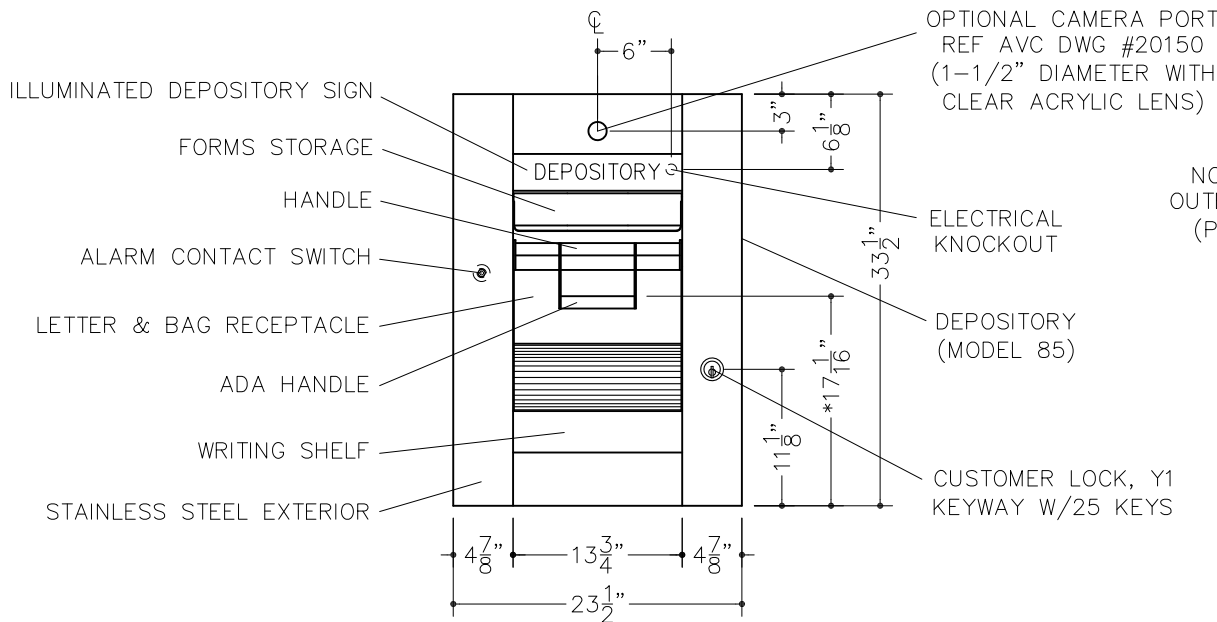


OPTIONAL CAMERA MOUNT KIT
REF AVC DWG #20150
(SET-UP TO RECEIVE SANYO
CUBE CAMERA AND LENS)



FINISHED OPENING
INTERIOR ELEVATION

VERTICAL SECTION



SIDE ELEVATION (*ADA HANDLE OPEN POSITION)

EXTERIOR ELEVATION (*ADA HANDLE CLOSED POSITION)

NOTES:

1. OUTER HOUSING (P/N 2063, SHOWN) IS FOR NON-GROUT INSTALLATION.
2. WELD HOUSING TO RECEIVING CHEST (NOT SHOWN) BEFORE INSTALLATION.
3. HOUSING SHOULD NOT BE ENCASED IN CONCRETE.

APPROXIMATE WEIGHTS:
DEPOSITORY: 280 LBS.
HOUSING: 325 LBS.

THIS PRODUCT SHOULD BE INSTALLED UNDER A WELL LIT CANOPY



American Vault[®] Waco Texas

PRODUCT APPLICATION DRAWING
2000 SERIES DEPOSITORY
MODEL 85 DEPOSITORY WITH
MODEL 2063 OUTER HOUSING

SIZE	DWG NO	DATE	SHEET
A	20006	12.01.2023	1 OF 1

2 INSTALLATION

2.1 Safety and Pre-Installation Procedures

- 2.1.1 Only professionals experienced and qualified in the installation should install this product. Misuse, lack of supervision and inspection can contribute to serious accidents or death.
- 2.1.2 Keep the work area clear of all trash and clutter.
- 2.1.3 Because of the extreme and concentrated weight of components; installations can be dangerous. Special methods for installation have been devised. Be sure the appropriate procedures are followed.
- 2.1.4 Know location of the nearest medical facility and "911" availability.
- 2.1.5 Verify the condition of safety equipment and tools.
- 2.1.6 When arriving at job-site introduce yourself to the General Contractor and/or job superintendent, explain:
 - The equipment you will be installing.
 - What your schedule will be.
 - What will be required of the contractor and/or electrician?
- 2.1.7 Check best route into building. Inform G.C. of weights involved. Inform G.C. of existing floor cracks or damage. If a basement or floor exists below the route of travel and/or under the installation area, the G.C. and all trades must be notified.
- 2.1.8 Caution other persons in the building to avoid the installation area. It is recommended to "cordon-off" the area.
- 2.1.9 It is the responsibility of the installer to anticipate and correct all hazardous conditions, including careless or thoughtless act of assistants or technicians who misguidedly try to "help".

2.2 Apparel

- 2.2.1 Personal safety equipment required (but not limited to):
 - Hard Hat, Safety Glasses, Safety Shoes, Gloves, First aid kit
- 2.2.2 Wear a hard hat whenever working at an installation or construction site.
- 2.2.3 Wear high top safety shoes with non-slip soles. Tools, bars, cribbing, rollers, etc. are frequently dropped and can cause injury.
- 2.2.4 Safety glasses are a must.
- 2.2.5 Leather faced gloves should be worn when handling cribbing, cables, chains or unfinished metals.

2.3 Unpacking and Inspection

- 1. Open shipping carton and remove the contents.

The carton should contain the following items:

1 ea.	2000 Series Model 85 Depository Operation & Installation Manual
1 ea.	Model 85 Depository
1 ea.	Outer Housing
25 ea.	Keys
1 ea.	Switch, Plunger Limit
2 ea.	HHCS ¼-20 x ¾
2 ea.	Nut Hex ¼-20

- 2. Remove lock nut from interior rear of depository outer housing by reaching under pallet. Do not discard this nut as it will be used during installation. Grasping depository fascia on each side, slide the unit out of outer housing and set aside. With depository unit out of the way, remove lag bolts in lower front of housing that secure it to the pallet.



7500 Mars Drive
Waco, TX 76712
(254) 776-0100 P
(254) 776-0700 F
www.AmericanVault.us

2 INSTALLATION (continued)

2.4 Site Requirements

Determine the use of the depository (ex: Walk-up or Drive-up unit). The unit should be located in a well lighted, high visibility area and should be protected from the elements with an overhead canopy or other appropriate structure. It is also recommended that a camera be installed to monitor the unit. If a Walk-up unit is to be installed, certain guidelines should be followed to insure that location complies with applicable ADA regulations.

There should be (2) 2 x 4 junction boxes with cover plate and ¾" conduit extending above ceiling line installed above opening. One (1) is for the alarm connection; one (1) is for electrical service to depository sign. In order to extend the life of the light fixture and lamp, the electrical service should be switched on & off using a photocell.

Refer to drawing #20006 for opening details.

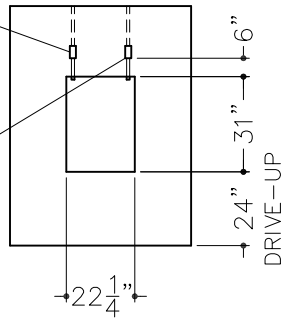
2.5 Installation Sequence

1. Weld outer housing to appropriate receiving chest. When requested this will come from the factory welded in place.
2. Attach appropriate wire to plunger switch included. Mount plunger switch in bracket on left side of outer housing.
3. From interior of facility position the receiving chest, with outer housing attached, in wall opening so that the outer housing protrudes 1" from face of building exterior finished wall. Shim chest as required so that bottom of outer housing clears lower edge of opening.
4. From building exterior, install anchors through (2) holes in bottom of outer housing into wall.
5. From exterior of facility, with the use of a lifting device, raise depository unit up until it aligns with the outer housing. Slide the unit in approximately 6" until the service angles on the enclosure side clear the holes in the service angle attached to the sides of the outer housing.
6. Install ¼-20 x ¾" long HHCS and nuts provided in holes provided in service angle.
7. Using flex conduit, connect electrical service to depository sign.
8. Slide unit completely into outer housing guiding ¾-10 bolt, at rear of depository into hole in bar at rear of outer housing. Insure that backside of fascia contacts alarm switch previously installed. If switch needs adjustment now is the time.
9. Install ¾-10 lock nut from inside safe compartment.
10. Check exterior for air gaps and apply sealant as required.

2 X 4 JUNCTION BOX WITH
3/4" CONDUIT & COVER
FOR 120V 15A SERVICE
TO DEPOSITORY SIGN

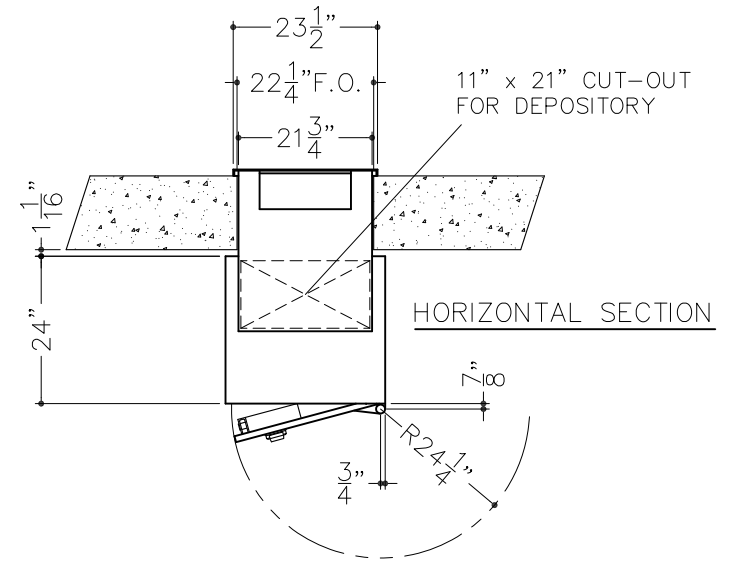
2 X 4 JUNCTION BOX WITH
3/4" CONDUIT & COVER
FOR ALARM CONNECTION

FINISHED FLOOR LINE

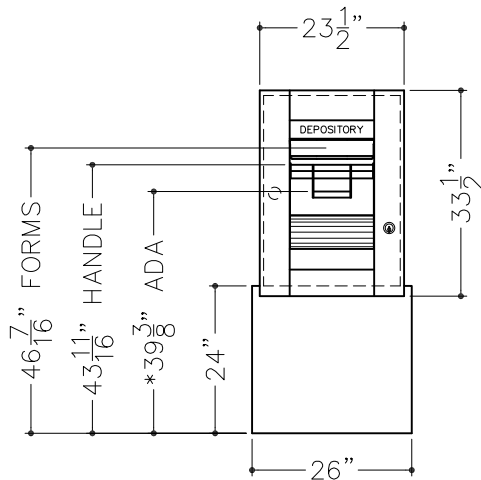


CAUTION!
ONLY PROFESSIONALS EXPERIENCED AND
QUALIFIED IN THE INSTALLATION OF SAFES
SHOULD INSTALL THIS PRODUCT.

THIS PRODUCT SHOULD BE INSTALLED
UNDER A WELL LIT CANOPY

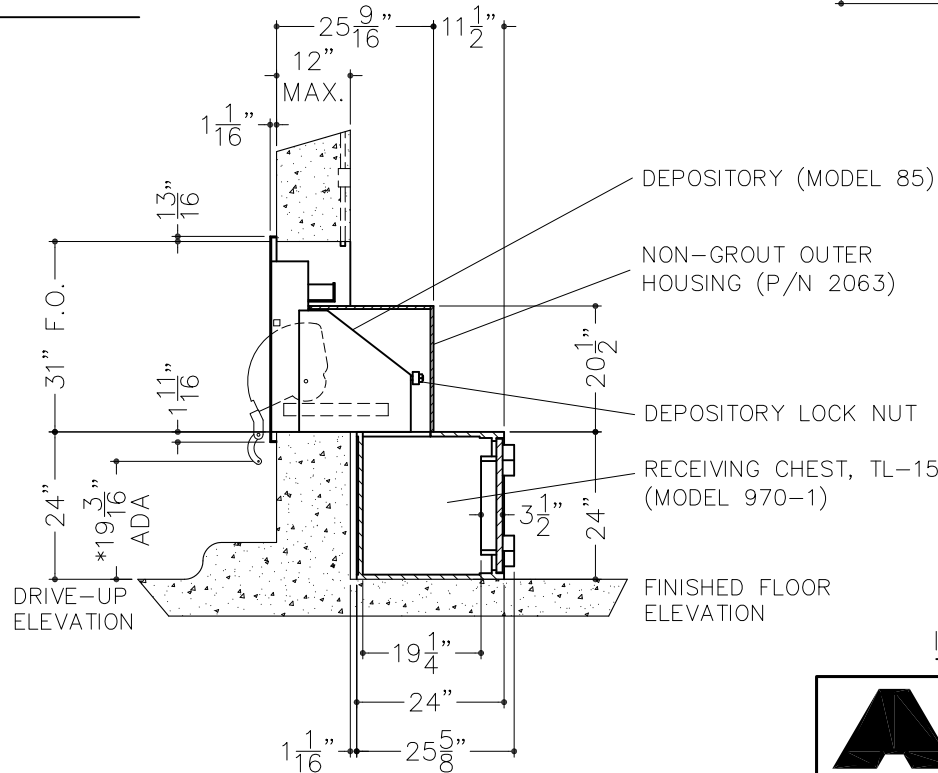


FINISHED OPENING
INTERIOR ELEVATION



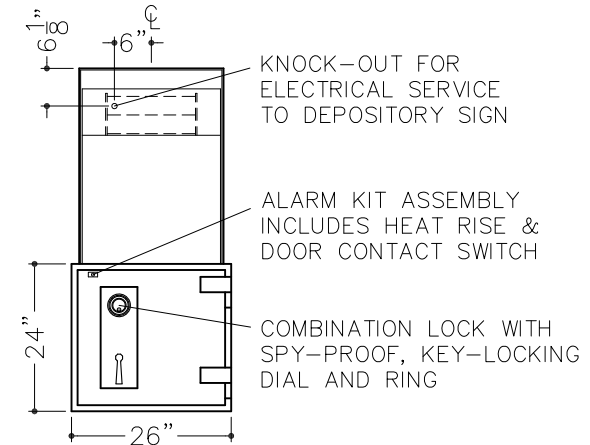
EXTERIOR ELEVATION

*ADA HANDLE CLOSED POSITION



VERTICAL SECTION

*ADA HANDLE OPEN POSITION



INTERIOR ELEVATION

NOTES:

1. RIGHT SWING SHOWN, LEFT SWING OPPOSITE.
2. NON-GROUT OUTER HOUSING (P/N 2063) IS TO BE WELDED TO RECEIVING CHEST AND SHOULD NOT BE ENCASED IN CONCRETE.
3. INTERIOR WALL OPENING AROUND OUTER HOUSING IS TO BE FILLED USING APPROPRIATE MATERIALS, BY OTHERS.

APPROXIMATE WEIGHTS:
RECEIVING CHEST: 575 LBS.
DEPOSITORY: 280 LBS.
HOUSING: 325 LBS.



American Vault[®] Waco Texas

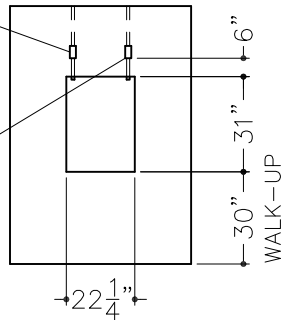
PRODUCT APPLICATION DRAWING
MODEL 970-1 TL-15 RECEIVING CHEST
WITH MODEL 85 DEPOSITORY
AND 2063 OUTER HOUSING

SIZE	DWG NO	DATE	SHEET
A	20043	12.01.2023	1 OF 1

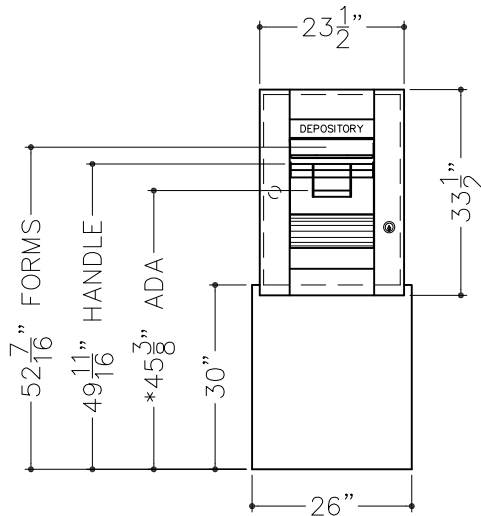
2 X 4 JUNCTION BOX WITH
3/4" CONDUIT & COVER
FOR 120V 15A SERVICE
TO DEPOSITORY SIGN

2 X 4 JUNCTION BOX WITH
3/4" CONDUIT & COVER
FOR ALARM CONNECTION

FINISHED FLOOR LINE



FINISHED OPENING
INTERIOR ELEVATION

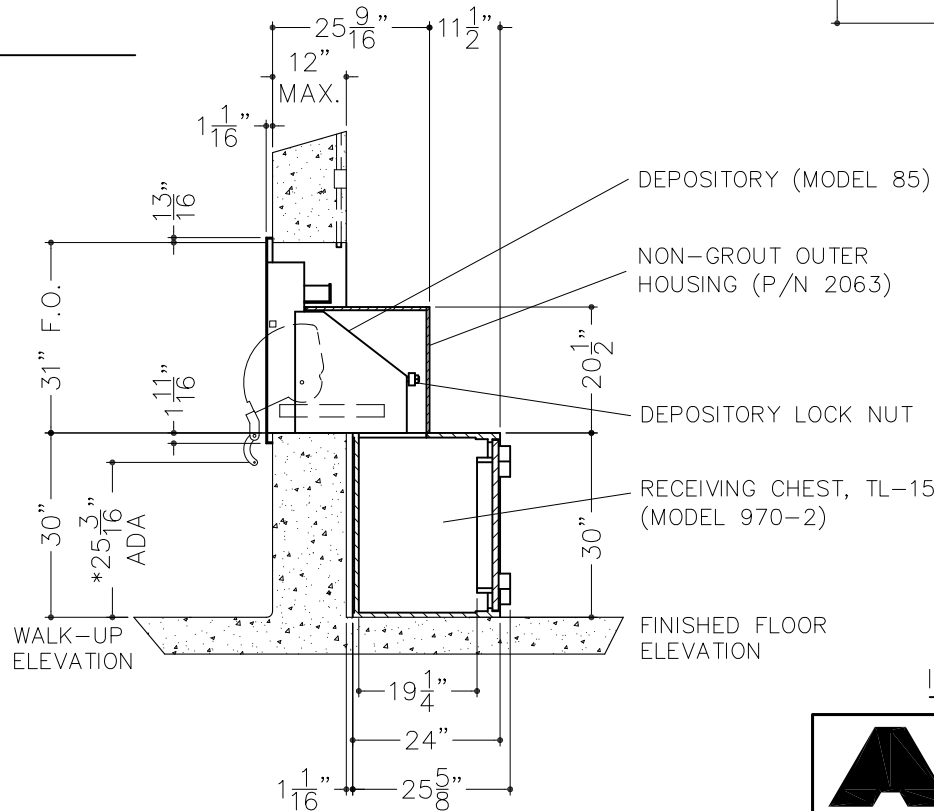


EXTERIOR ELEVATION

*ADA HANDLE CLOSED POSITION

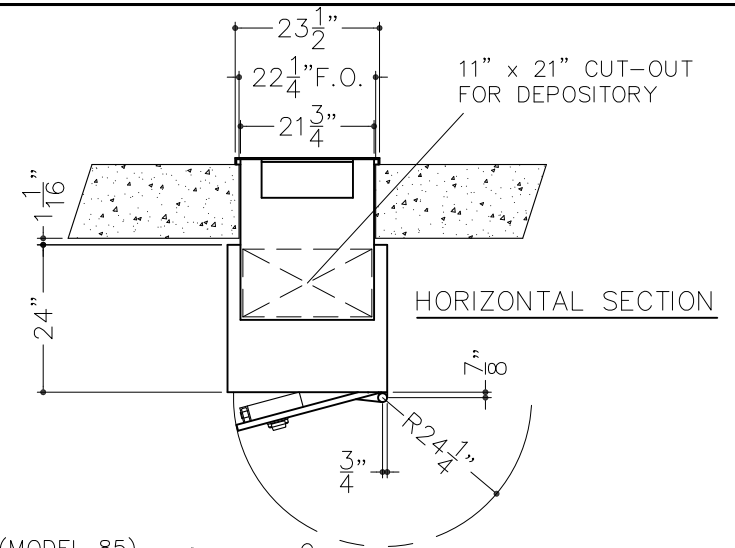
CAUTION!
ONLY PROFESSIONALS EXPERIENCED AND
QUALIFIED IN THE INSTALLATION OF SAFES
SHOULD INSTALL THIS PRODUCT.

THIS PRODUCT SHOULD BE INSTALLED
UNDER A WELL LIT CANOPY

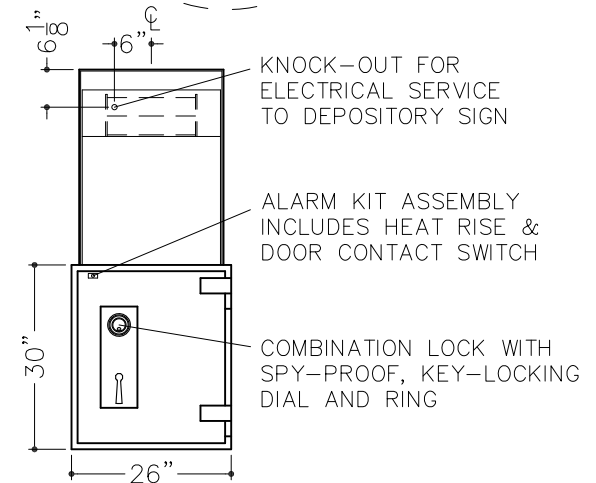


VERTICAL SECTION

*ADA HANDLE OPEN POSITION



HORIZONTAL SECTION



INTERIOR ELEVATION

NOTES:

1. RIGHT SWING SHOWN, LEFT SWING OPPOSITE.
2. NON-GROUT OUTER HOUSING (P/N 2063) IS TO BE WELDED TO RECEIVING CHEST AND SHOULD NOT BE ENCASED IN CONCRETE.
3. INTERIOR WALL OPENING AROUND OUTER HOUSING IS TO BE FILLED USING APPROPRIATE MATERIALS, BY OTHERS.

APPROXIMATE WEIGHTS:
RECEIVING CHEST: 675 LBS.
DEPOSITORY: 280 LBS.
HOUSING: 325 LBS.



American Vault[®] Waco Texas

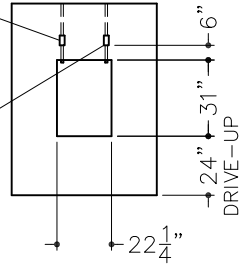
PRODUCT APPLICATION DRAWING
MODEL 970-2 TL-15 RECEIVING CHEST
WITH MODEL 85 DEPOSITORY
AND 2063 OUTER HOUSING

SIZE	DWG NO	DATE	SHEET
A	20044	12.01.2023	1 OF 1

2 X 4 JUNCTION BOX WITH
3/4" CONDUIT & COVER
FOR 120V 15A SERVICE
TO DEPOSITORY SIGN

2 X 4 JUNCTION BOX WITH
3/4" CONDUIT & COVER
FOR ALARM CONNECTION

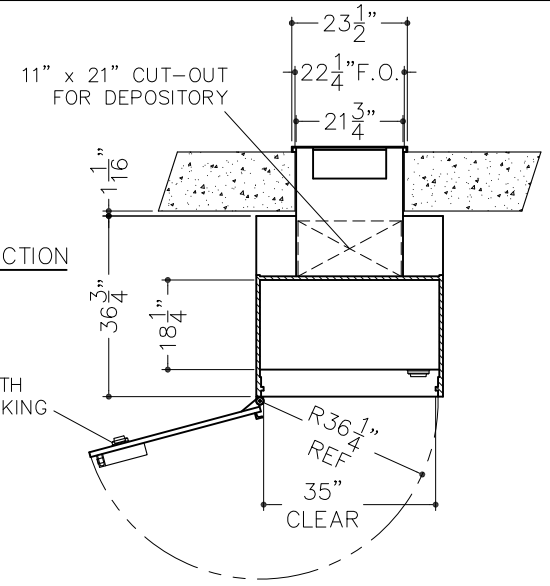
FINISHED FLOOR LINE



FINISHED OPENING
INTERIOR ELEVATION

CAUTION!
ONLY PROFESSIONALS EXPERIENCED AND
QUALIFIED IN THE INSTALLATION OF SAFES
SHOULD INSTALL THIS PRODUCT.

THIS PRODUCT SHOULD BE INSTALLED
UNDER A WELL LIT CANOPY



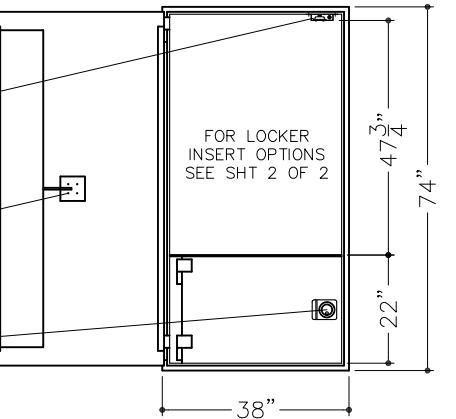
HORIZONTAL SECTION

COMBINATION LOCK WITH
SPY-PROOF, KEY-LOCKING
DIAL AND RING

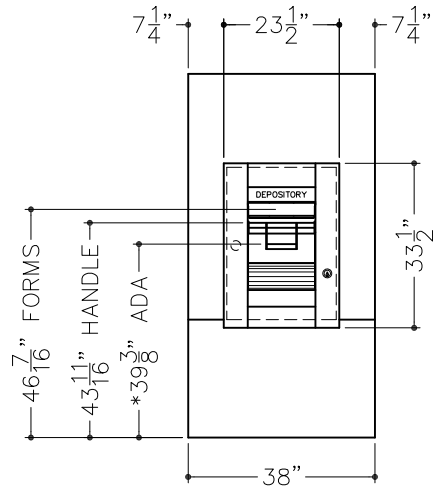
ALARM KIT ASSEMBLY
INCLUDES HEAT RISE &
DOOR CONTACT SWITCH

PREPARED FOR 2 OR 3
MOVEMENT TIME LOCK

COMBINATION LOCK WITH
FRONT READ, KEY-LOCKING
DIAL AND RING

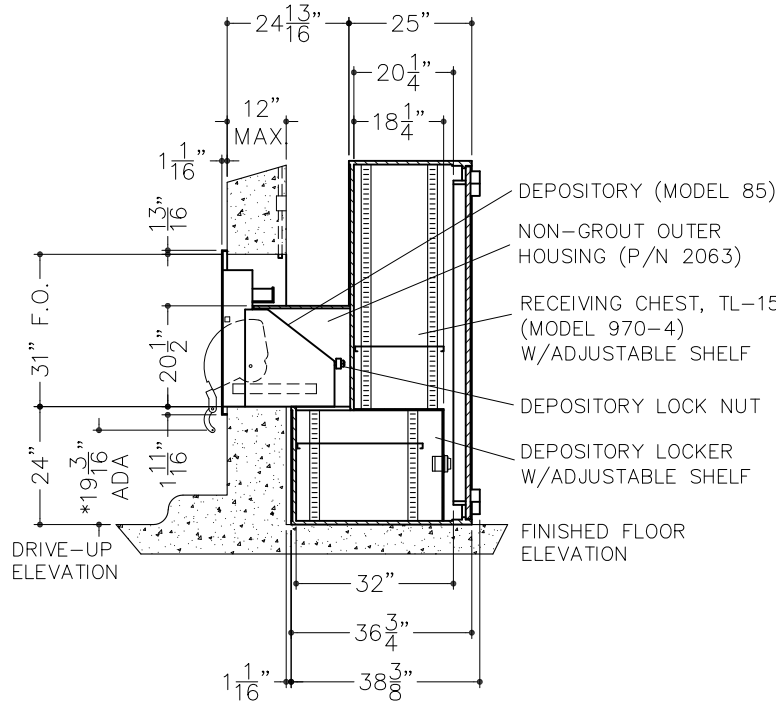


INTERIOR ELEVATION
(SHOWN WITH DOOR OPEN FOR CLARITY)



EXTERIOR ELEVATION

*ADA HANDLE CLOSED POSITION



VERTICAL SECTION

*ADA HANDLE OPEN POSITION

NOTES:

1. LEFT SWING SHOWN, RIGHT SWING OPPOSITE.
2. NON-GROUT OUTER HOUSING (P/N 2063) IS TO BE WELDED TO RECEIVING CHEST AND SHOULD NOT BE ENCASED IN CONCRETE.
3. INTERIOR WALL OPENING AROUND OUTER HOUSING IS TO BE FILLED USING APPROPRIATE MATERIALS, BY OTHERS.
4. SET-UP TO RECEIVE 500 SERIES LOCKERS (18" DEEP). FOR LOCKER INSERT OPTIONS, SEE SHEET 2 OF 2.

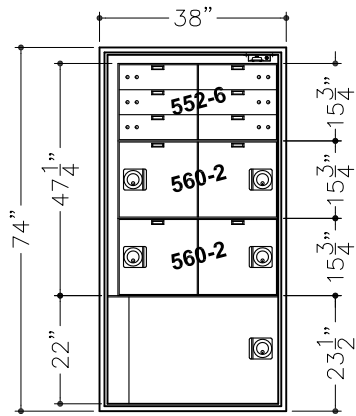
APPROXIMATE WEIGHTS:
RECEIVING CHEST: 2,210 LBS.
DEPOSITORY: 280 LBS.
HOUSING: 325 LBS.



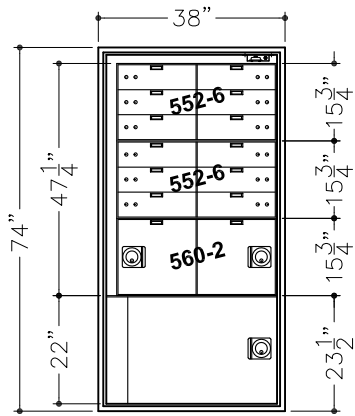
American Vault[®] Waco Texas

PRODUCT APPLICATION DRAWING
MODEL 970-4 TL-15 RECEIVING CHEST
WITH MODEL 85 DEPOSITORY
AND 2063 OUTER HOUSING

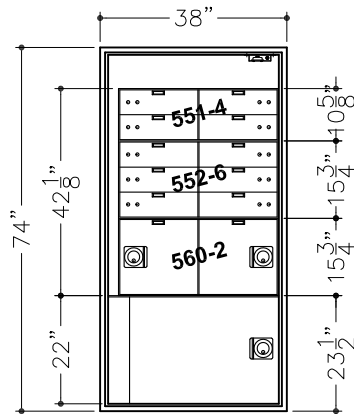
SIZE	DWG NO	DATE	SHEET
A	20111	12.01.2023	1 OF 2



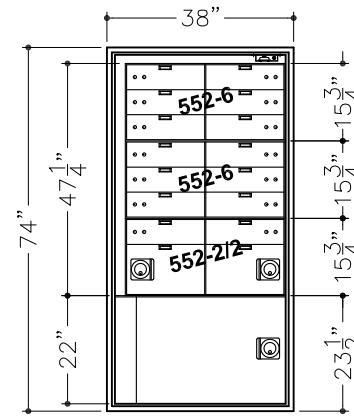
(6) 5x16 TELLER LOCKERS
(4) 15x16 CASH LOCKERS



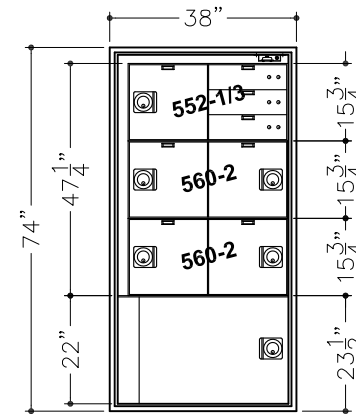
(12) 5x16 TELLER LOCKERS
(2) 15x16 CASH LOCKERS



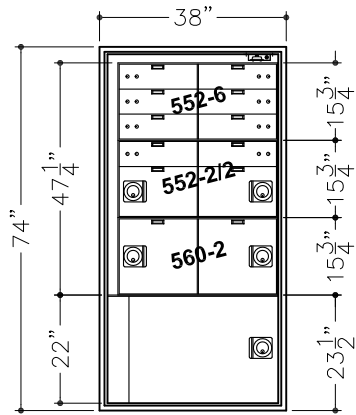
(10) 5x16 TELLER LOCKERS
(2) 15x16 CASH LOCKERS



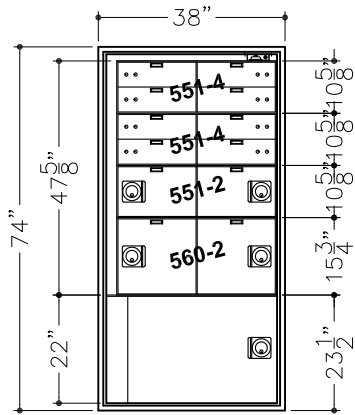
(14) 5x16 TELLER LOCKERS
(2) 10x16 CASH LOCKERS



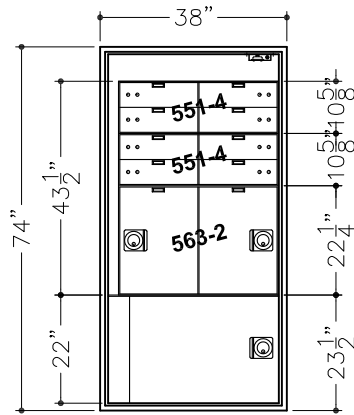
(3) 5x16 TELLER LOCKERS
(5) 15x16 CASH LOCKERS



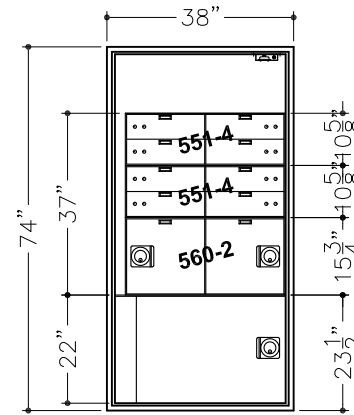
(8) 5x16 TELLER LOCKERS
(2) 10x16 CASH LOCKERS
(2) 15x16 CASH LOCKERS



(8) 5x16 TELLER LOCKERS
(2) 10x16 CASH LOCKERS
(2) 15x16 CASH LOCKERS



(8) 5x16 TELLER LOCKERS
(2) 22x16 CASH LOCKERS



(8) 5x16 TELLER LOCKERS
(2) 15x16 CASH LOCKERS

CAUTION!
ONLY PROFESSIONALS EXPERIENCED AND
QUALIFIED IN THE INSTALLATION OF SAFES
SHOULD INSTALL THIS PRODUCT.



American Vault[®] Waco Texas

PRODUCT APPLICATION DRAWING
MODEL 970-4 TL-15 RECEIVING CHEST
WITH MODEL 85 DEPOSITORY
AND 2063 OUTER HOUSING

SIZE	DWG NO	DATE	SHEET
A	20111	12.01.2023	2 OF 2

3 OPERATION

3.1 Devices

3.1.1 Lock & Key

Located on the lower right front of the fascia.

3.1.2 Light Fixture & Lamp

Located in the upper middle of fascia behind "Depository" sign.

3.1.3 Plunger Switch

Located on the upper left side of the outer housing.

3.1.4 Receptacle

Located in the middle of the unit.

3.1.5 Pull Handle

Located on the upper edge of the receptacle.

3.2 Letter & Bag Set-UP

Unless otherwise specified all units are shipped from the factory as Letter & Bag set-up. They can be field converted to Bag only set-up if required. Refer to Figure 3-1 for lock conversion instructions.

3.2.1 Letter Operation Sequence

This sequence is intended for use by all customers. The depository will open to the letter position without the use of a key.

1. Firmly grasp handle on upper face of receptacle and pull until it stops. This will expose a deposit slot of approximately $\frac{1}{2}$ " x 12".
2. Deposit envelope into slot making sure that it does not protrude above receptacle.
3. Grasp handle and close until it stops. (Note: Receptacle may not be re-opened until the closing cycle has been completed).
4. Open and close again to insure that receptacle is clear of deposit.

3.2.2 Bag Operation Sequence

The key will unlock the receptacle to open to the bag position. This mode of operation is intended for use by customers who have been issued keys.

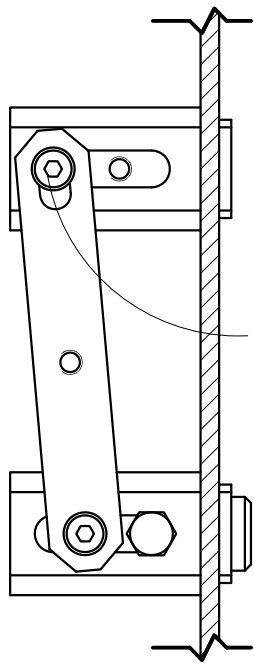
1. Insert key into lock.
2. Turn key counter clockwise to unlock.
3. Firmly grasp handle on upper face of receptacle and pull until it stops. This will expose a deposit slot of approximately 7" x 12".
4. Deposit bag into slot making sure that it does not protrude above receptacle.
5. Grasp handle and close until it stops. (Note: Receptacle may not be re-opened until the closing cycle has been completed).
6. Open and close again to insure that receptacle is clear of deposit.
7. Turn key clockwise to lock and remove. (Note: Key cannot be removed while receptacle is open).

3.3 Bag Only Set-up

The key will unlock the receptacle to open to the bag position. The receptacle will not open to expose an envelope slot. This mode of operation is intended for use only by customers who have been issued keys.

3.4 Lock Conversion Detail

Refer to Figure 3-1.



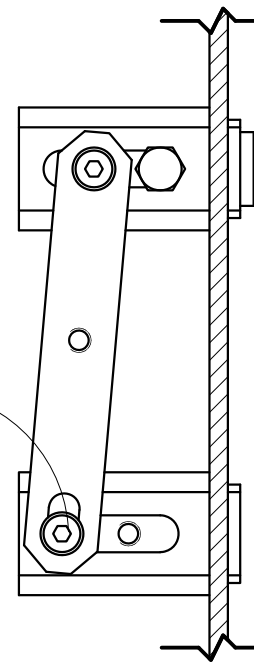
MOVABLE

NOTE DIFFERENCE IN
ACTUATOR ARM
ORIENTATION

FIXED

-01

LOCK SET-UP FOR
LETTER & BAG DEPOSIT



FIXED

MOVABLE

-02

LOCK SET-UP FOR
BAG DEPOSIT ONLY

American
vault[®] Waco Texas

PRODUCT APPLICATION DRAWING
LOCK CONVERSION DETAIL
2000 SERIES MODEL 85 DEPOSITORY

SIZE	DWG NO	DATE	SHEET
A	FIGURE 3-1	12.01.2023	1 OF 1



7500 Mars Drive
Waco, TX 76712
(254) 776-0100 P
(254) 776-0700 F
www.AmericanVault.us

4 MAINTENANCE

4.1 Preventative Maintenance

1. Do not expose depository to harsh chemicals typically used in the construction industry (such as "acid" for washing brick). These chemicals will permanently damage the appearance of the unit.
2. It is recommended that the light be placed on a switched circuit to prolong the life of the lamp.
3. Unit should be well protected from the elements (such as rain) by a canopy or other appropriate structure.
4. Unit should be placed in a well lighted area to protect it from vandalism.
5. Unit should be monitored by a surveillance camera for protection from vandalism.

4.2 Periodic Maintenance

1. Apply lubricating grease once a year to all operating linkages and mechanisms. Recommended lubricant Novagard #G322L or equivalent.
2. Replace lamp in depository sign as needed.
3. Check to insure that gasket around light cover is intact. Replace as needed.
4. Apply lubricant to lock once a year.
5. Check alarm contact switch on outer housing for continuity.