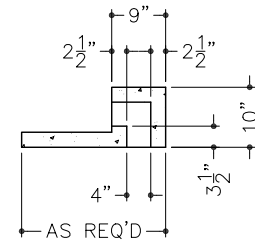
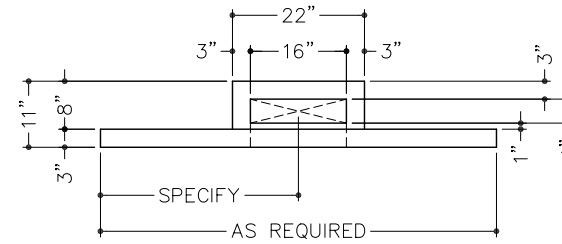


FRONT ELEVATION

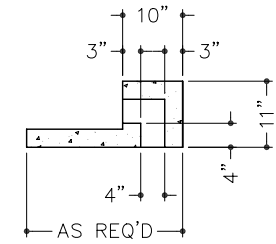


VERTICAL SECTION

MODEL 215VPM, U.L. CLASS M

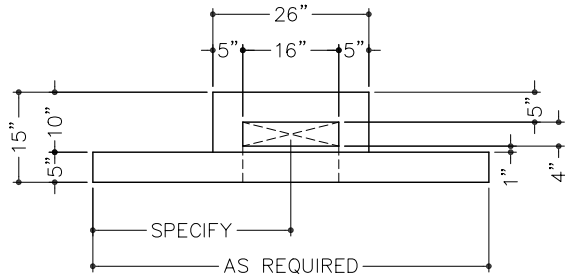


FRONT ELEVATION

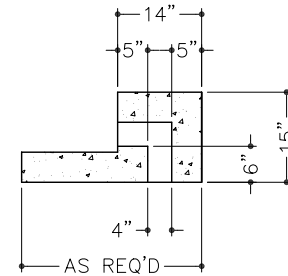


VERTICAL SECTION

MODEL 215VP1, U.L. CLASS 1

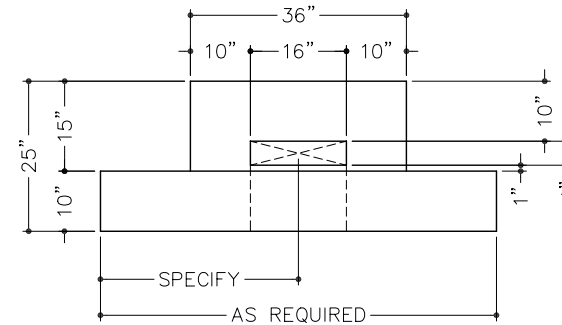


FRONT ELEVATION

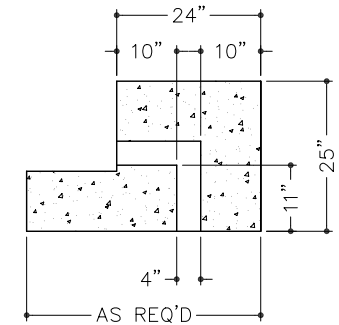


VERTICAL SECTION

MODEL 215VP2, U.L. CLASS 2



FRONT ELEVATION



VERTICAL SECTION

MODEL 215VP3, U.L. CLASS 3

HVAC PORT NOTES:

1. HVAC PORTS ARE USED FOR A SECURE CONNECTION OF AN OUTSIDE VENTILATING SYSTEM THAT PROVIDES CIRCULATING AIR WITHIN THE VAULT.
2. HVAC PORTS CAN BE CAST INTO A MODULAR VAULT ROOF PANEL (SHOWN) OR WALL PANEL.
3. SPECIFY AT THE TIME OF MODULAR VAULT ORDER.
4. PANELS ARE CONSTRUCTED OF FIBER REINFORCED CONCRETE AND REBAR IN A FIVE-SIDED STEEL PAN. STEEL PAN FORMS INTERIOR OF VAULT WITH EXPOSED CONCRETE ON EXTERIOR.
5. ALL INSIDE ADJOINING SURFACES TO BE WELDED WITH 1" OF 1/8" WELD PER FOOT OF LENGTH.
6. ALL UTILITY CONNECTIONS ARE BY OTHERS.
7. PANELS ARE SHIPPED "KNOCK-DOWN" TO BE ERECTED AT JOB SITE PER SPEC'S FURNISHED.
8. ALL DIMENSIONS NOMINAL. TOLERANCES OF 1/32" PER FOOT OF LENGTH ARE TO BE ALLOWED.
9. THIS STRUCTURE IS NOT DESIGNED FOR ADDITIONAL LOADS APPLIED TO THE ROOF.
10. IT IS THE RESPONSIBILITY OF THE OWNER/ARCHITECT/GENERAL CONTRACTOR TO ENSURE THAT ALL LOCAL, STATE, & FEDERAL ADA REGULATIONS ARE IN COMPLIANCE.
11. PANELS ARE CAST WITH LIFT POINTS EACH END. REQUEST (P/N 9040-0002) 3/4" T-12 LIFTING SWIVEL AND (P/N 9040-0006) 3/4"x 4" COIL BOLT FOR PROPER RIGGING ATTACHMENT.

**CAUTION !**

**PRIOR TO INSTALLATION READ VAULT PANEL INSTALLATION PROCEDURES AND VAULT DOOR INSTALLATION MANUAL PROVIDED. ONLY PROFESSIONALS EXPERIENCED AND QUALIFIED IN THE INSTALLATION OF MODULAR VAULTS AND VAULT DOORS SHOULD INSTALL THIS PRODUCT.**

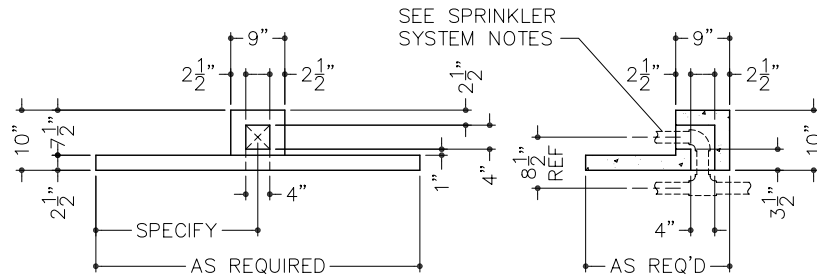
REFER TO SHEET 2 OF 2 FOR SPRINKLER PORT DETAILS.



PRODUCT APPLICATION DRAWING  
215 SERIES BURGLARY RESISTANT  
HVAC PORT & SPRINKLER PORT



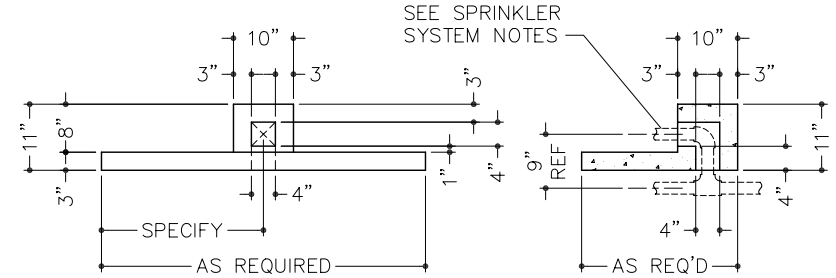
SIZE	DWG NO	DATE	SHEET
A	20199	05.02.2016	1 OF 2



FRONT ELEVATION

VERTICAL SECTION

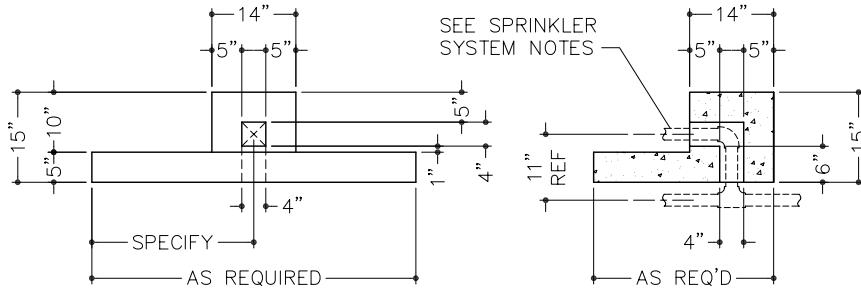
MODEL 215SPM, U.L. CLASS M



FRONT ELEVATION

VERTICAL SECTION

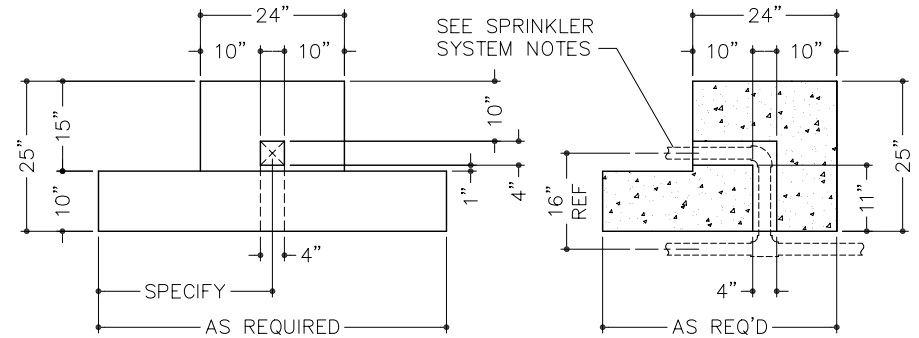
MODEL 215SP1, U.L. CLASS 1



FRONT ELEVATION

VERTICAL SECTION

MODEL 215SP2, U.L. CLASS 2



FRONT ELEVATION

VERTICAL SECTION

MODEL 215SP3, U.L. CLASS 3

**SPRINKLER PORT NOTES:**

1. VAULT SPRINKLER PORTS ARE USED TO PROVIDE A SECURE CONNECTION OF THE FIRE SPRINKLER SYSTEM FROM OUTSIDE THE VAULT TO WITHIN THE VAULT.
2. SPRINKLER PORTS CAN BE CAST INTO A MODULAR VAULT ROOF PANEL (SHOWN) OR WALL PANEL.
3. SPECIFY AT THE TIME OF MODULAR VAULT ORDER.
4. PANELS ARE CONSTRUCTED OF FIBER REINFORCED CONCRETE AND REBAR IN A FIVE-SIDED STEEL PAN. STEEL PAN FORMS INTERIOR OF VAULT WITH EXPOSED CONCRETE ON EXTERIOR.
5. ALL INSIDE ADJOINING SURFACES TO BE WELDED WITH 1" OF 1/8" WELD PER FOOT OF LENGTH.
6. ALL UTILITY CONNECTIONS ARE BY OTHERS.
7. PANELS ARE SHIPPED "KNOCK-DOWN" TO BE ERRECTED AT JOB SITE PER SPEC'S FURNISHED.
8. ALL DIMENSIONS NOMINAL. TOLERANCES OF 1/32" PER FOOT OF LENGTH ARE TO BE ALLOWED.
9. THIS STRUCTURE IS NOT DESIGNED FOR ADDITIONAL LOADS APPLIED TO THE ROOF.
10. IT IS THE RESPONSIBILITY OF THE OWNER/ARCHITECT/GENERAL CONTRACTOR TO ENSURE THAT ALL LOCAL, STATE, & FEDERAL ADA REGULATIONS ARE IN COMPLIANCE.
11. PANELS ARE CAST WITH LIFT POINTS EACH END. REQUEST (P/N 9040-0002) 3/4" T-12 LIFTING SWIVEL AND (P/N 9040-0006) 3/4"x 4" COIL BOLT FOR PROPER RIGGING ATTACHMENT.

**SPRINKLER SYSTEM NOTES:**

THE 4" SQUARE OPENING PROVIDED THRU EACH SPRINKLER PORT WILL ACCOMMODATE UP TO 1-1/2" SCHEDULE 40 PIPE FITTINGS, SHOWN. FITTINGS SHOWN FOR REFERENCE ONLY, SPRINKLER SYSTEM BY OTHERS.



PRODUCT APPLICATION DRAWING  
215 SERIES BURGLARY RESISTANT  
HVAC PORT & SPRINKLER PORT

**CAUTION !**  
**PRIOR TO INSTALLATION READ VAULT PANEL INSTALLATION PROCEDURES AND VAULT DOOR INSTALLATION MANUAL PROVIDED. ONLY PROFESSIONALS EXPERIENCED AND QUALIFIED IN THE INSTALLATION OF MODULAR VAULTS AND VAULT DOORS SHOULD INSTALL THIS PRODUCT.**

SIZE	DWG NO	DATE	SHEET
<b>A</b>	20199	05.02.2016	2 OF 2