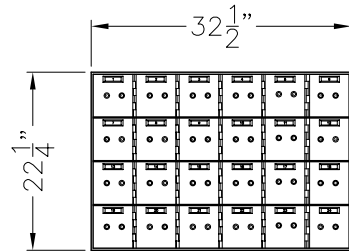
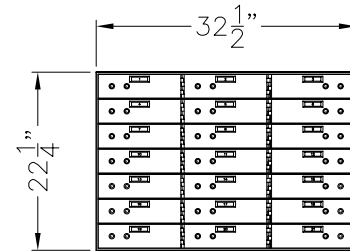


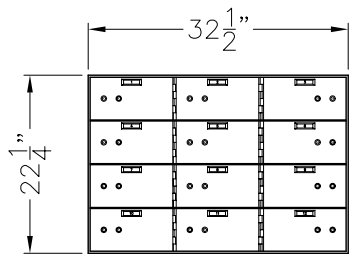
MODEL 522-42
(42) 3 x 5 OPENINGS



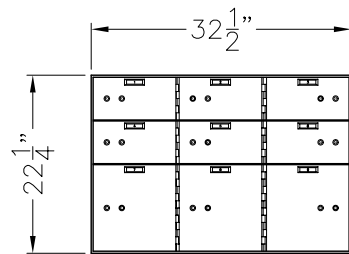
MODEL 522-24
(24) 5 x 5 OPENINGS



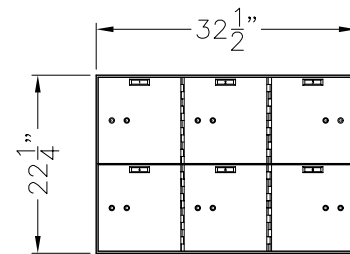
MODEL 522-21
(21) 3 x 10 OPENINGS



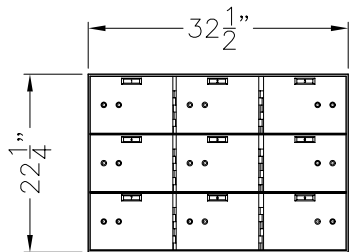
MODEL 522-12
(12) 5 x 10 OPENINGS



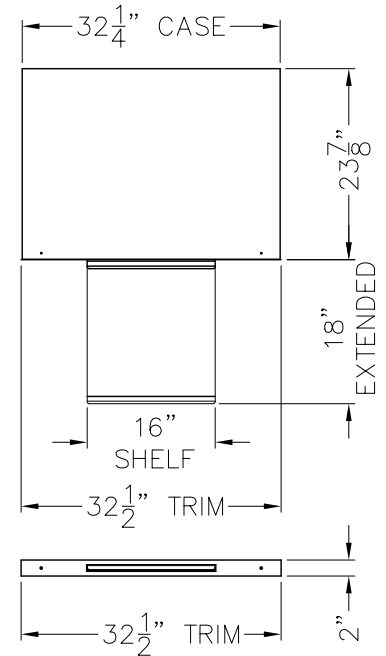
MODEL 522-9
(6) 5 x 10 OPENINGS
(3) 10 x 10 OPENINGS



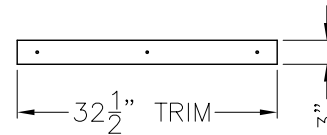
MODEL 522-6
(6) 10 x 10 OPENINGS



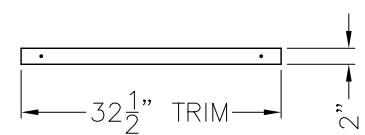
MODEL 522-9A
(9) 7 x 10 OPENINGS



MODEL 522-9200
PULL SHELF ASSEMBLY



MODEL 522-9100
BASE ASSEMBLY



MODEL 522-9300
SPACER ASSEMBLY

- SECTION SIZE: 22-1/4" HIGH x 32-1/2" WIDE x 24" DEEP
- REINFORCED COATED STEEL CASE WITH ANODIZED ALUMINUM FRONT FRAME
- ALL SECTIONS HAVE PROVISIONS FOR SECURING ADJOINING SECTIONS AT TOP, BOTTOM, AND SIDES
- DOORS MACHINED FROM SOLID ALUMINUM ALLOY WITH STAINLESS STEEL FRONT
- NUMBER STRIPS WITH BLACK CHARACTERS ON A BRASS TONE BACKGROUND SET IN A FRAME WHICH COMPLEMENTS THE STAINLESS STEEL DOOR FRONT PLATE
- UL LISTED DOUBLE NOSE FIXED/FIXED LOCKS FINISHED IN BRASS
- FRAME INTERLOCKING HINGES FINISHED IN BRASS
- REMOVABLE METAL BOND BOXES
- BASE ASSEMBLY IS COMPLETE WITH STAINLESS STEEL TRIM, AND LEVELING LEGS

American Vault[®].us

PRODUCT APPLICATION DRAWING
500 SERIES SAFE DEPOSIT BOX
MODEL 522

SIZE	DWG NO	DATE	SHEET
A	20118	03.04.2013	1 OF 1