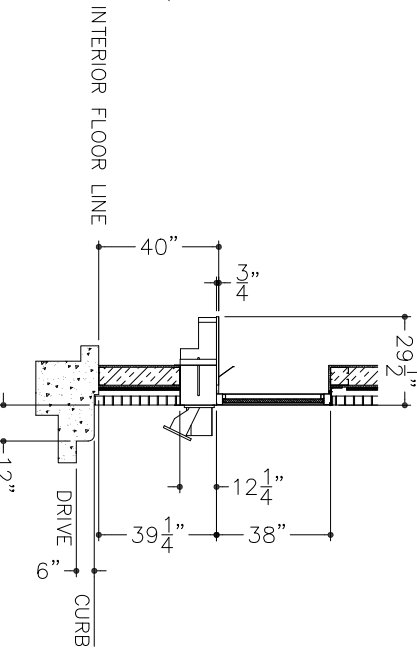
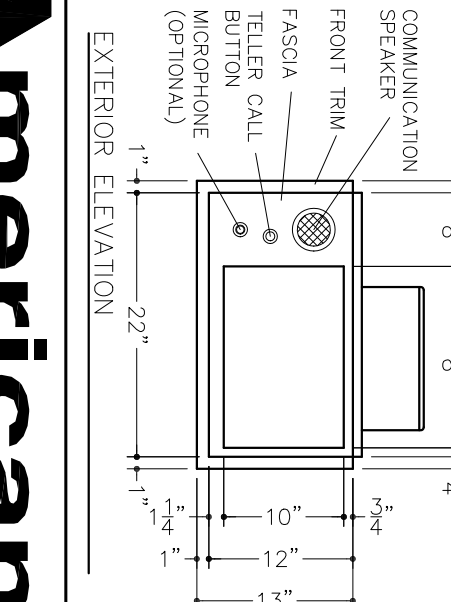
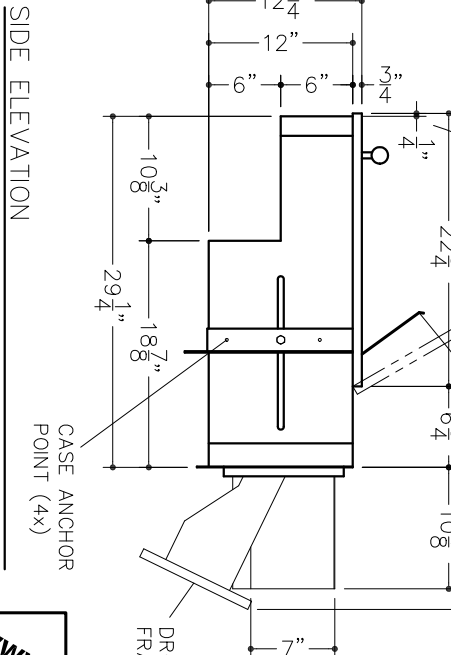
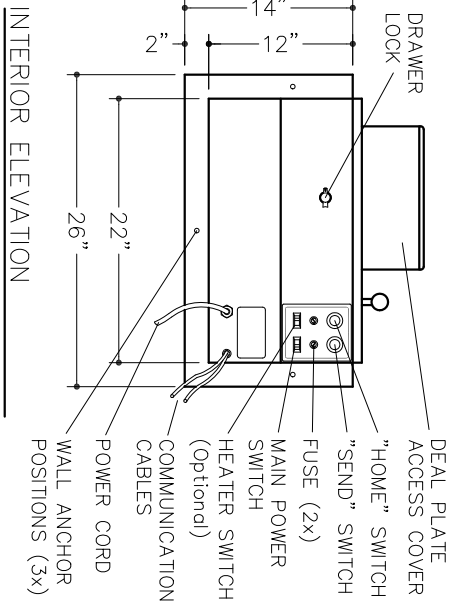


WALL OPENING DETAIL (AS VIEWED FROM INTERIOR)



VERTICAL SECTION



DESCRIPTION:
 ELECTRICALLY OPERATED, UL LISTED, BULLET RESISTANT, (UL 752 LEVEL 1) TRANSACTION DRAWER WITH MANUAL OVERRIDE. DRAWER IS 7"H x 12"W AND UTILIZES DROP FRAME DESIGN FOR ACCESS FROM VARIOUS VEHICLE HEIGHTS. DRAWER TRAVEL IS FACTORY SET TO 12" AND FIELD CONVERTIBLE TO 18". FORMICA COVERED, HINGED TOP FOR SERVICE ACCESS.

APPROXIMATE WEIGHT: 150 LBS.



www.american

American

aault.us

PRODUCT APPLICATION DRAWING
 300 SERIES DEAL DRAWER
 MODEL 1000A

SIZE A	DWG NO 20032	DATE 03.04.2013	SHEET 1 OF 1
------------------	-----------------	--------------------	-----------------